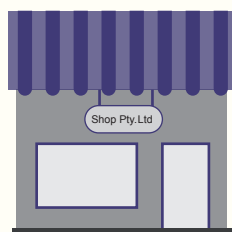


2.6 MILLION BUSINESSES

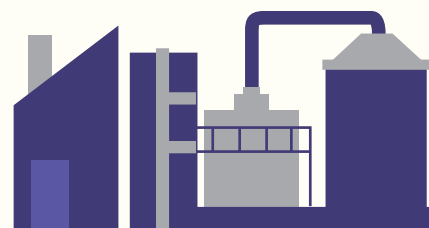
SMALL 97.6%



MEDIUM 2.2%

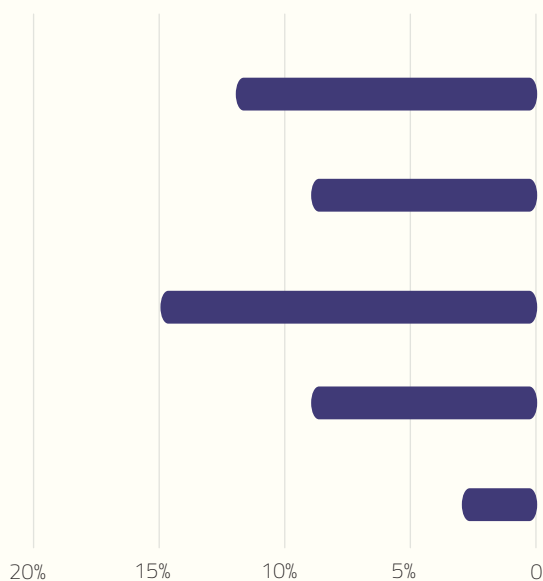


LARGE 0.2%



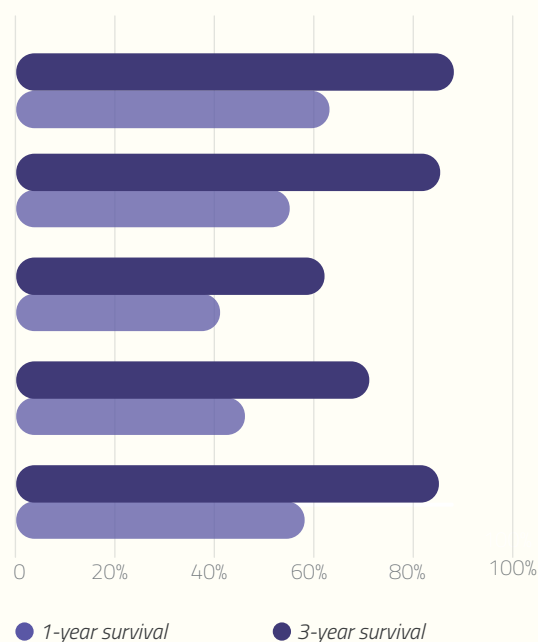
BUSINESS ENTRY AND SURVIVAL RATES ARE SIMILAR TO OTHER COUNTRIES

ENTRY



SURVIVAL

Australia
Israel
South Korea
New Zealand
United States



DID YOU KNOW?



of businesses close each year for reasons other than financial failure. They can be **sold**, **passed onto family members**, **associates** or **employees** or **closed**.