



CAN REMOTE AREA TAX CONCESSIONS AND PAYMENTS BE FAIRER AND BETTER TARGETED?

WHAT SYSTEMS ARE WE LOOKING AT?



ZONE TAX
OFFSET
(ZTO)



REMOTE AREA
ALLOWANCE
(RAA)



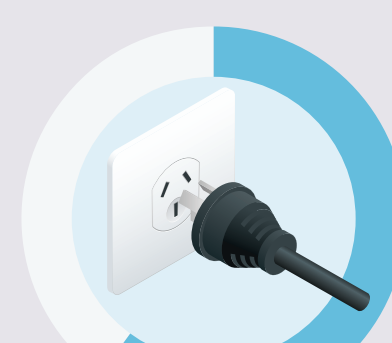
FBT REMOTE
AREA
CONCESSIONS

DOES THE ZTO OR RAA FIT A MODERN AUSTRALIA?

The **ZTO** dates back to **World War II** when many comforts were not available to remote area Australians.



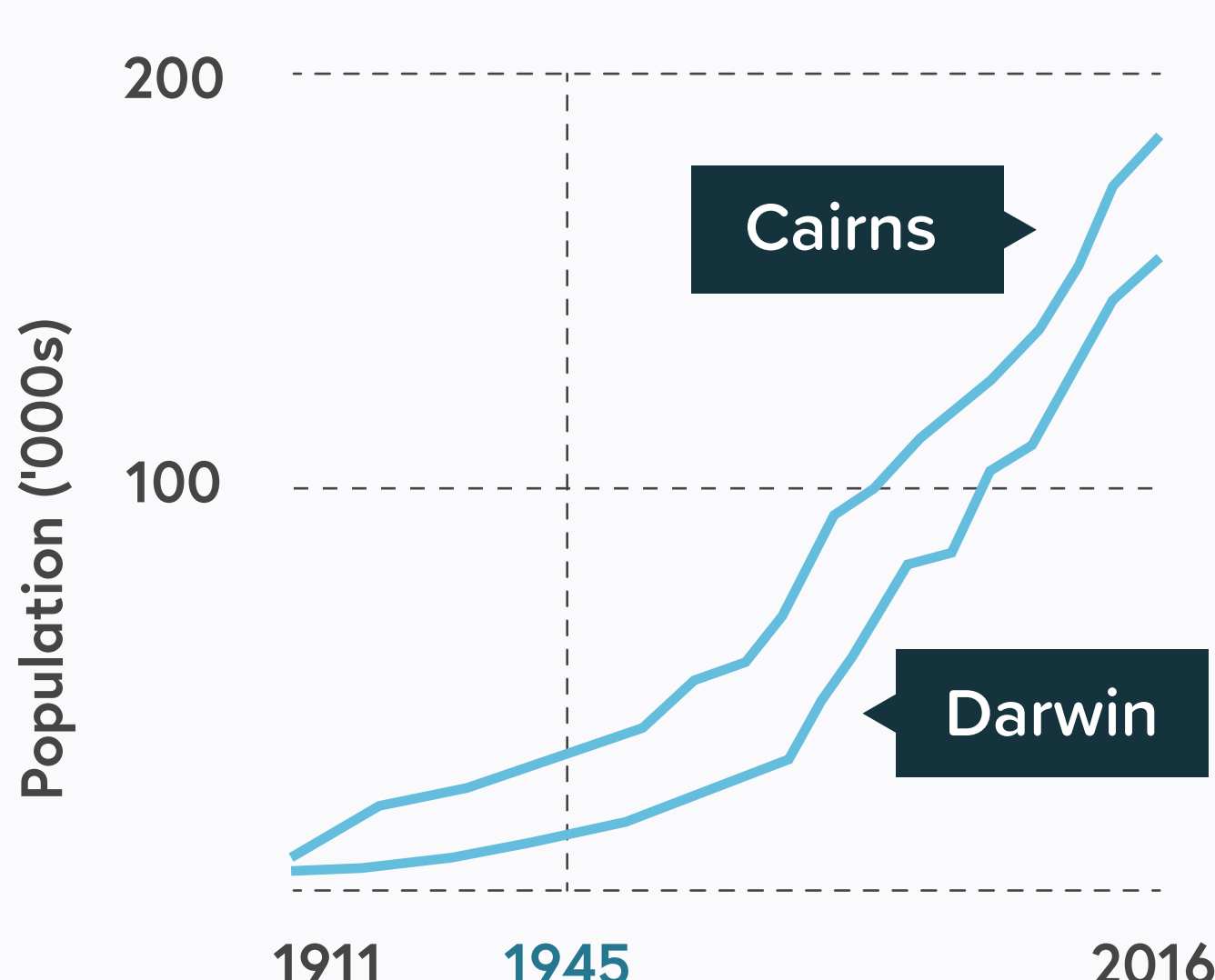
NO
TV OR INTERNET



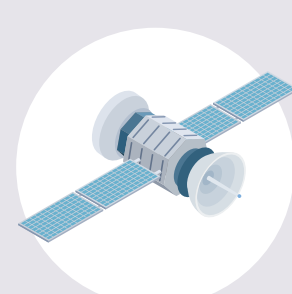
65%
HAD ELECTRICITY



And many of the eligible areas like Cairns and Darwin are **no longer remote** ...



There's less isolation with developments in ...



COMMUNICATIONS



TRANSPORT

45%

of recipients of the **ZTO** concession live in **Darwin, Cairns, Mackay** and **Townsville**



RAA MAP



The **RAA** boundaries haven't been updated since the **1980s**, and the rates have been unchanged since **2000**



FBT remote area concessions are a means of making the FBT more equitable for employers in remote areas, but they are **overly generous** and **poorly targeted**

CAN THE SYSTEM BE FAIRER AND BETTER TARGETED FOR THOSE WHO NEED IT?

Have your say on what we're recommending in our **Remote Area Tax Concessions and Payments** draft report at pc.gov.au/remote-tax