

Flight over the marshes 24/10/2012



Diversion into Sandy Camp



Terrigal with dead trees



Old diversion out of Terrigal downstream from
Gibson's way



Diversion has been attempted to be reclosed



Area of dead trees near bypass that has
recovered

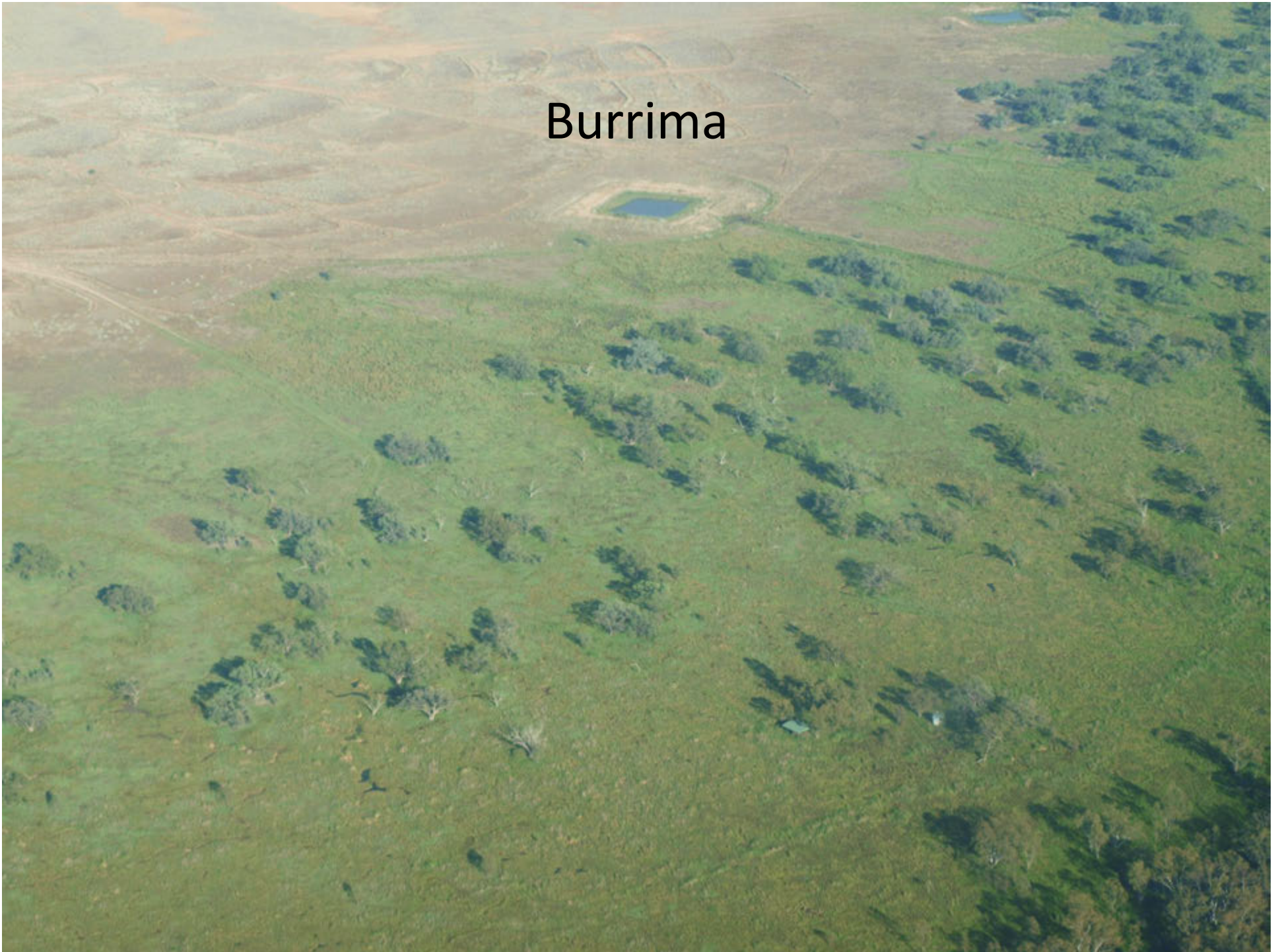


Core reed beds





Burrima



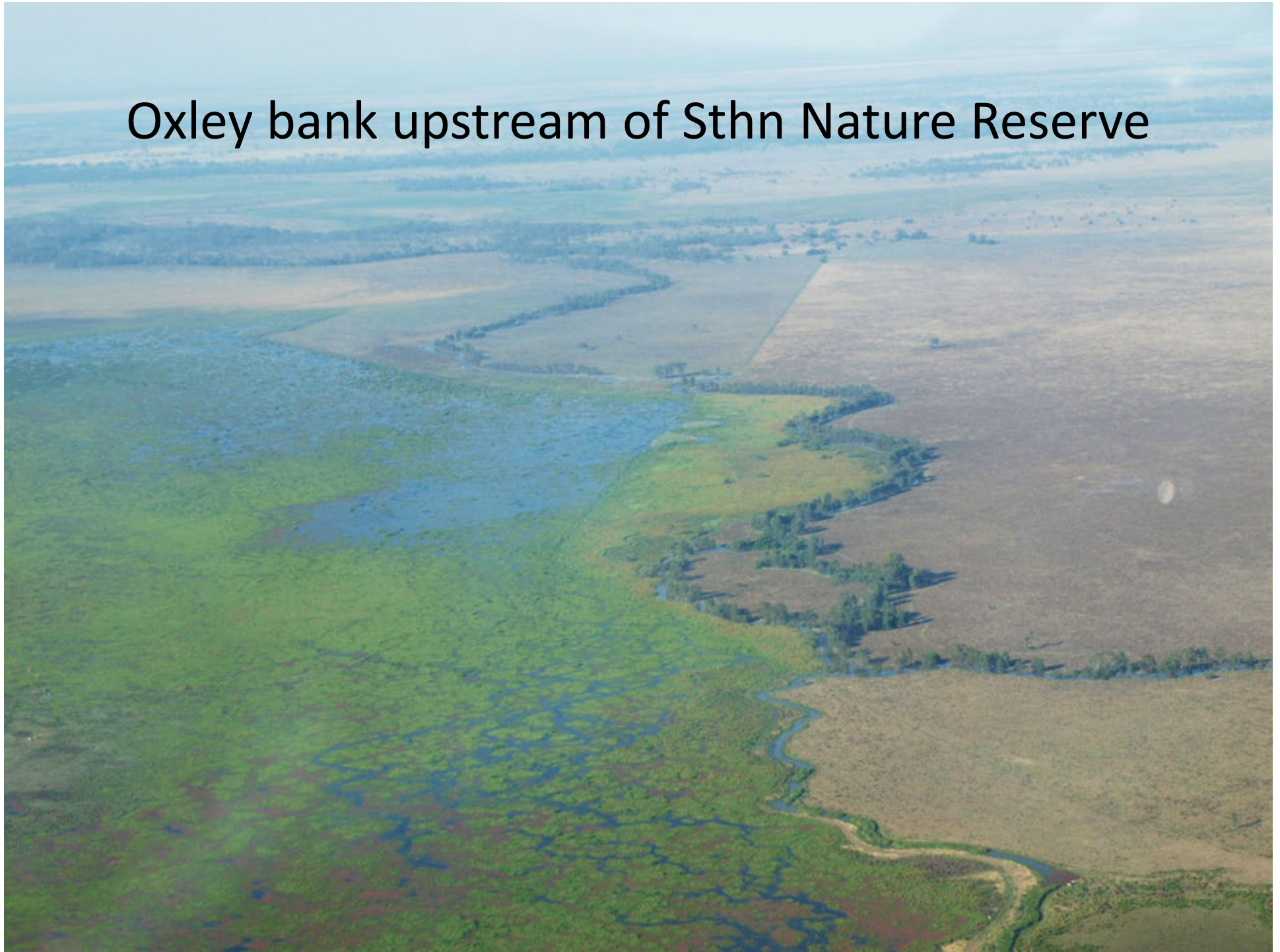
Fence line on Nthn Nature Reserve



Pillicawarrina



Oxley bank upstream of Sthn Nature Reserve







Oxley bank at regulator boards

