

# Livingin Independent Living Project



*“These days, housing is seen as a commodity rather than a necessity for truly living. A home – a place where the soul is calmed and nourished. For those of us with disabilities, this stark fact is often intensified umpteen fold.”*

*Mike Duggan  
President Qld Disability Housing Coalition*

## KEY POINTS



This **LivingIn Independent Living Project** is a collaboration between Queensland University of Technology, The Design Institute of Australia and Kyabra Community Association Inc.

The Project breathes life and opportunity into the Australian Government's commitment to implement a National Disability Strategy that recognises the need for a new whole of government, whole of life approach. The innovative funding model recognizes the need for government, community and corporate to work collaboratively.

It demonstrates a model that reflects the work of the Disability Investment Group by accessing private investment and utilising a business model that decreases reliance on government alone to come up with solutions. It is a vision for the future that is affordable, financially and environmentally sustainable and that enlists the support of government, corporate and community stakeholders.

## KEY POINTS (cont)



It is aligned with the intent and philosophy that has arisen from the ongoing National Dialogue on Universal Housing. In particular it will provide template designs for Universal Housing that incorporate the seven principles of Universal Design and incorporate both physical and cognitive impairments. This will be an essential body of action research that will inform the building industry and associated legislative frameworks.

It will affirm the value and benefits of a National Disability Insurance Scheme by demonstrating how business can see people with a disability as consumers in need of goods and services.

The Project works with families who have an adult son or daughter with a disability to design and construct housing that enables a move to independent living in accommodation that caters for their particular physical or cognitive restrictions.

## **There are a number of unique features that place this Project at the forefront of innovative action research:**



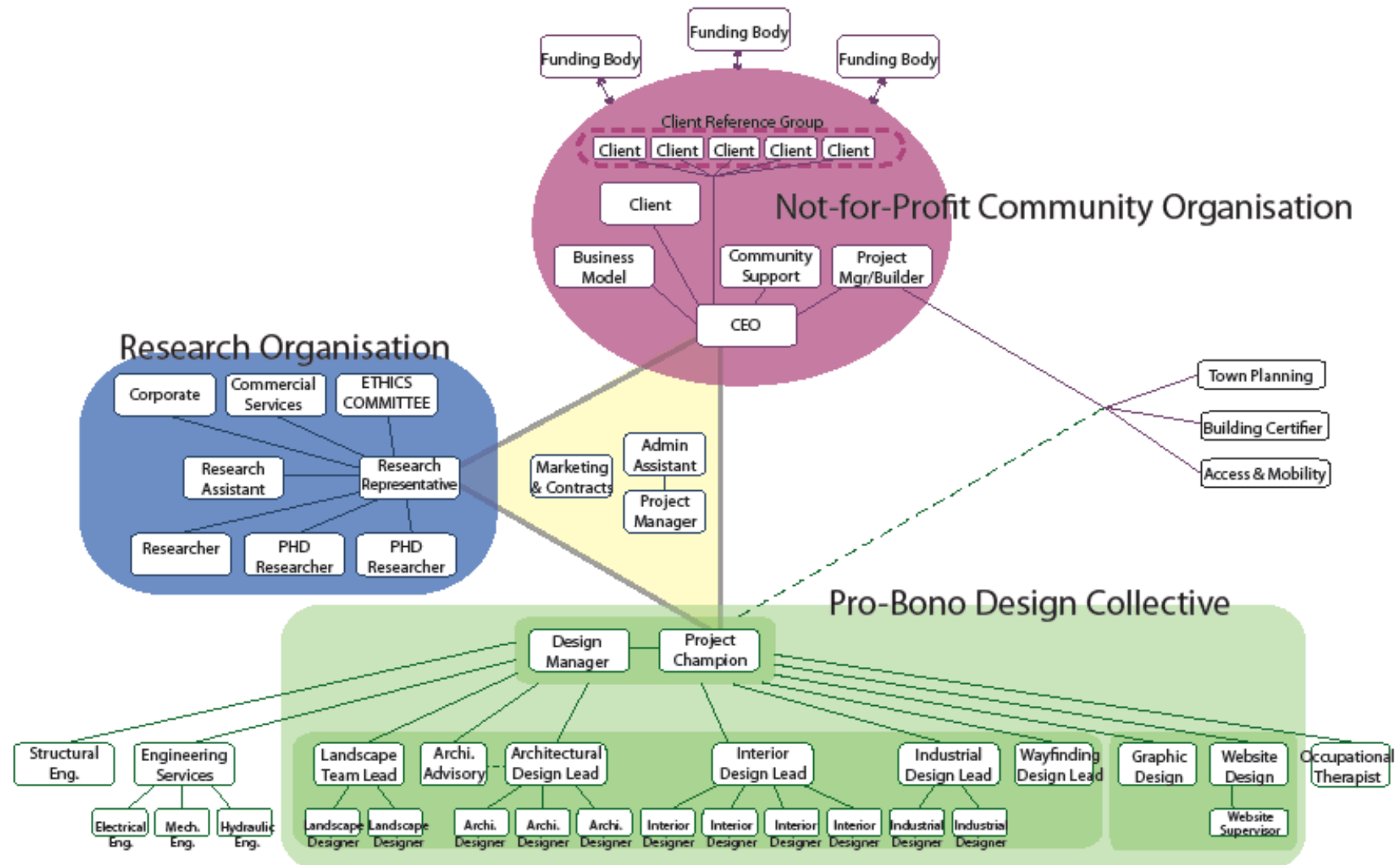
1. Universal Design has tended to focus on physical access and the Project broadens this focus to the application of universal design principles to a range of physical and cognitive impairments. The application is relevant to an ageing population.
2. Individuals and families are involved in all aspects of design and construction. This ensures that their hopes for independent accommodation of their choosing can be realised.
3. The Business model developed to deliver an affordable housing outcome is financially sustainable and not dependent on ongoing financial support from external sources.
4. The rights of people with a disability to participate fully in society are enhanced through the development of inclusive and affordable accommodation.
5. Environmental sustainability is central to design.
6. The housing outcome is functional, inclusive and visually beautiful.

## The Mission and Vision of the Project is as follows:



*The Collective will provide a world's best practice model of Universal Design for government and community to enact their hopes for an inclusive society enshrined in human rights worldwide. The Collective will achieve this through the development of a process and model of research, design and development that is collaborative, innovative, affordable and sustainable. Our Vision is of fair, thriving, sustainable communities that instill hope, embrace diversity, promote safety, and in which all people feel a sense of belonging.*

# PROJECT STRUCTURE



## The Project Partners



### THE DESIGN INSTITUTE OF AUSTRALIA

The Design Institute of Australia (DIA) is Australia's professional membership body for designers and design businesses. Membership in the DIA indicates status as a qualified, experienced, ethical practicing professional.

**The DIA champions the importance of design in building the commercial and cultural wealth of Australia.**

On behalf of its members, the DIA is a member of the major international design organisations. It provides designers with valuable associations at state, national and international levels. The DIA has a number of teams dedicated to the Project. These include Structural Engineers, Architects, Industrial Designers, Interior Designers; Graphic Designers, Landscape Designers and Website Designers. All of these professionals are offering pro bono input into this Project because of its enormous benefit to improve societal outcomes.



## The Project Partners



### KYABRA COMMUNITY ASSOCIATION INC.

Kyabra Community Association is an incorporated not for profit body founded in 1975. Kyabra provides a range of services across the following areas:

- Disability support
- Child and youth family support
- Supported accommodation
- Community development and community training
- Professional training and development
- Kyabra social business group



## ***Kyabra Social Enterprises***



Kyabra Social Enterprises was set up by Kyabra Community Association Inc. to progress its vision particularly in the area of affordable and accessible housing. Within this Enterprise lies SRCB Pty Ltd (trading as Livingin Constructions) which is a licensed and registered Building Company. This Company has a track record of producing affordable and accessible housing.

A Landscaping Business (Livingin Landscapes) now sits within this group and has the capacity to design and complete external environment that is tailored to the individual and universally accessible.



# ***Building Tomorrows Together Project***



1. Supporting families and individuals to access appropriate housing, make financial decisions and gain access to formal and informal supports.
2. Supporting young people with a disability to move into their own home in the community.
3. Supporting young people to have opportunities to make friendships, learn new skills, connect with their local community and to lead a rich and contributing life in their new home.
4. Continuing to link with and support an increased number of families to make plans for the future.
5. Strengthening relationships with other service providers working towards goals of independent community living arrangements and future plans for people with disabilities, therefore allowing for increased collaboration and the sharing of resources for families.
6. Seek funding that will support individuals to live in their own home.
7. Focus on building the capacity and involvement of the wider community.
8. The Project Workers will continue to act as resource to each young person/adult and their family; supporting them to access information and resources, develop skills for independence, create connections in their local area and explore unpaid and general supports relevant for each of their situations. In this way each person's plan will be designed by themselves, for their own future.



## The Project Partners



### QUEENSLAND UNIVERSITY OF TECHNOLOGY

Queensland University of Technology (QUT) is a highly successful Australian university with an applied emphasis in courses and research. Based in Brisbane, QUT is a top Australian University with global connections and a reputation for quality undergraduate and postgraduate courses, a wide range of studies and applied research best suited to the needs of industry and the community.

Queensland University of Technology contributors include:

- QUT Corporate
- QUT Commercial Services
- QUT Ethics Committee
- Head of School/School of Design
- Research Assistant
- Three PHD Students
- A number of students from all design disciplines.

# The Allingham Street Project



## **The Extent of Disability**

- 7.6% of Queensland's population is living with a severe or profound core activity restriction (6.2% nationally)
- 140% increase 1989 -2009
- Population ageing drives projected growth in severe disability

## **Implications**

- Increase in figures requires Universal Design incorporating physical and cognitive restrictions
- Premature entry into Aged Care Facilities
- Solutions require collaboration between Government, Business and Community

## THE BENEFITS



- A model that enacts the principle of government, community and corporate sectors to deliver a vision for the future for people with a disability.
- A Template for the Building Industry to incorporate Universal Design that goes beyond physical access.
- A demonstration for Private and Corporate Investors which affirms both the intent and benefit of a National Disability Insurance Scheme.
- A Project that is world's best practice with exposure at both a national and international level.
- The Livingin Independent Living Project provides the research, design, construction and financial models to develop and implement a world's best practice response to this critical need.
- Employment and Training opportunities.

# THE STAKEHOLDERS



- People with a disability and their families
- Government
- Peak disability bodies and advocacy groups
- Academic and professional design associations and professional bodies
- Private investors
- Corporate investors
- The building industry



# OPPORTUNITIES FOR BROADER EDUCATION



The Project represents the collaboration of a wide and talented group of design professionals in a consensus design process that incorporates the full participation of people with disabilities and their families. This innovative process will be presented at 2010 Design Conferences in Tokyo, London, Chicago and Auckland giving significant exposure to designers around the world.

The Model can be utilised to inform both policy and legislation in relation to the Building Industry.

The involvement of stakeholders across community, government and corporate provides greater insight into the needs of people with a disability.

A Project Website is currently being developed by Griffith University. The Website will display acknowledgement, logos and links of all major partners.

All public materials associated with the Project will acknowledge all partners.