



RECEIVED
22 OCT 2012
John Miller

First things first

Our 20 year State Infrastructure Strategy



Read Infrastructure NSW's 20 year State Infrastructure Strategy



Learn more about WestConnex, a key recommendation of our 20 year strategy

INSW is managing the delivery of the Sydney International Convention, Exhibition & Entertainment Precinct redevelopment

[learn more](#)

Latest News

First Things First: 20 year State Infrastructure Strategy

Wednesday, October 03, 2012

Infrastructure NSW releases its 20 year State Infrastructure Strategy [Read more](#)

NSW Government announces Glebe Island to be interim exhibition site

Monday, September 17, 2012

An interim facility will be built on Glebe Island to temporarily host exhibitions [Read more](#)

Ports Public Transport Energy
Roads Communications Water

REFERENCES



Hawkesbury Floodplain Risk Management Study & Plan

Committee Draft - 23/07/12



Drawing of night-time rescues during the 1867 Hawkesbury River flood (Source: Illustrated Sydney News, June 1867)

Volume 1 – Main Report Draft for Public Exhibition

July 2012

Report of Hawkesbury City Council's Floodplain Risk Management Advisory Committee



HAWKESBURY CITY COUNCIL

Hawkesbury Floodplain Risk Management Study & Plan

Volume 1 – Main Report
Draft for Public Exhibition

July 2012

Report of Hawkesbury City Council's Floodplain Risk Management Advisory Committee



Prepared by:

Bewsher Consulting Pty Ltd
6/28 Langston Place, Epping NSW 2121 Australia
P O Box 352, Epping NSW 1710 Australia
Telephone: (02) 9868 1966. Facsimile: (02) 9868 5759
Web: www.bewsher.com.au E-mail: postmaster@bewsher.com.au
ACN 003137068. ABN 24 312 540 210

The concepts and information contained in this document are the property of Bewsher Consulting Pty Ltd. Use or copying of this document in whole or part without the written permission of Bewsher Consulting Pty Ltd constitutes an infringement of copyright. This report has been prepared on behalf of and for the exclusive use of Bewsher Consulting Pty Ltd's client. Bewsher Consulting Pty Ltd accepts no liability or responsibility whatsoever in respect of any use of or reliance upon this report by any third party.

IMAGES



Night rescue scene

Source: *Illustrated Sydney News*, 16 July 1867, p.1



The drowning of the families of William and Thomas Eather

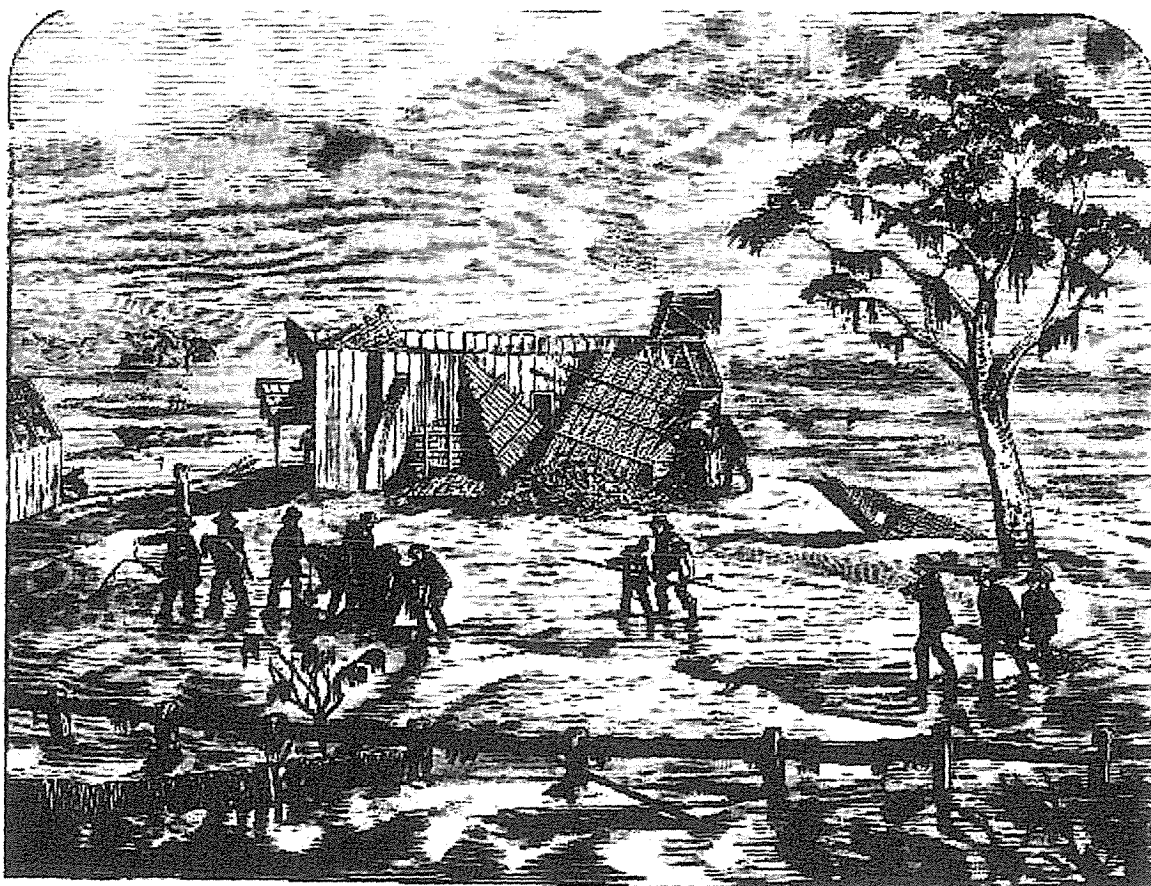
Source: *Illustrated Sydney News*, 16 July 1867, p.8



Rescue boats rowing through the bush at night
Source: *Illustrated Sydney News*, 16 July 1867, p.9



Each scene during the floods
Source: *Illustrated Sydney News*, 16 July 1867, p.9



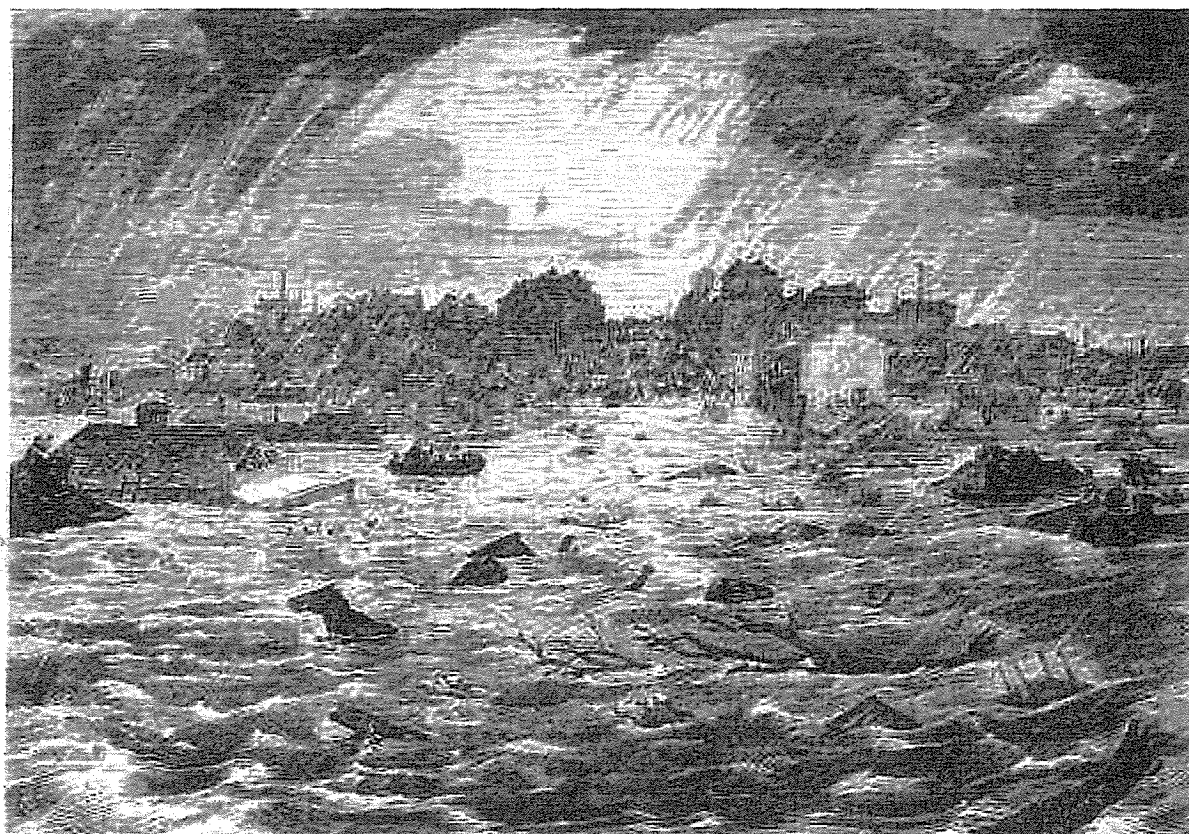
The ruins of the Eathers' house and the finding of the drowned

Source: *Illustrated Sydney News*, 16 August 1867, p.8



Ryans Punt near Windsor

Source: Wood engraving, 27 July 1867 (State Library of Victoria, Image Number: mp001184)



Windsor at Nightfall

Source: W.H. Harrison wood engraving, 27 July 1867 (State Library of Victoria, Image Number: mp001185)

10. REFERENCES

AGD (Attorney General's Department), 2009, *Flood Preparedness*, Australian Emergency Manual's Series Manual 20, Commonwealth of Australia.

AWACS (Australian Water and Coastal Studies), April 1997, *Lower Hawkesbury River Flood Study*, prepared for DLWC.

Becker, J., Johnston, D., Coomer, M. & Ronan, K. 2008a. *Flood risk perceptions, education and warning in four communities in the Hawkesbury-Nepean Valley, New South Wales, Australia – results of a questionnaire survey, February 2006*, GNS Science Report 2008/02, Institute of Geological and Nuclear Sciences, Lower Hutt, NZ (prepared for NSW SES).

Becker, J., Johnston, D., Ronan, K. & Coomer, M., 2008b. *Flood risk perceptions, education and warning in four communities in the Hawkesbury-Nepean Valley, New South Wales, Australia – data report for a follow-up questionnaire, April 2008*, GNS Science Report 2008/23, Institute of Geological and Nuclear Sciences, Lower Hutt, NZ (prepared for NSW SES).

Bewsher Consulting, May 2000, *Pitt Town Local Hydraulics Specification Study*, prepared for DLWC.

Bewsher, D. and Grech, P., 2009, *Flood Risk Mapping – What, Why, How*, paper presented to the Joint 49th Annual FMA Conference (NSW), Albury-Wodonga.

Bewsher Consulting, November 2000, *Wilberforce Local Hydraulics Specification Study*, prepared for DLWC.

Bewsher Consulting, April 2001, *Flood Evacuation and the Implications for Future Land Use*, prepared for DLWC.

Bewsher Consulting, February 2003, *Agnes Banks Local Hydraulics Specification Study*, prepared for DLWC.

Bewsher Consulting, May 2003, *Hawkesbury-Nepean Local Hydraulics Specification Study*, prepared for DSNR.

Bewsher Consulting, September 2004, *Thorley Street (Bligh Park) Flood Evacuation Route: Local Hydraulics Specification Study*, prepared for DIPNR.

Bewsher Consulting, December 2007, *Bligh Park Evacuation Route Study*, prepared for HCC.

Bewsher Consulting, March 2008, *Victoria Caravan Parks Flood Emergency Management Plan Template*, prepared for Steering Committee with CMAs, DSE, VICSES and Vic CPA.

Bewsher Consulting, June 2008, *Caravan Parks Flood Safety Study*, prepared for Shoalhaven City Council.

Bewsher Consulting, August 2008, *Hobartville Evacuation Route Study*, prepared for HCC.

Bewsher Consulting, March 2011(a), *Bligh Park Evacuation Route Options Study*, prepared for HCC.

Bewsher Consulting, March 2011(b), *Hobartville Evacuation Route Options Study*, prepared for HCC.

Bewsher Consulting and Grech Planners, May 2011, *Tweed Valley Floodplain Risk Management Study and Plan, Planning Considerations*. Draft Report.

Blong, R., December 2000, *Insurance Industry Perspectives on Flood Losses*, prepared for Hawkesbury-Nepean Floodplain Management Strategy Steering Committee.

Blong, R., May 2001, *Residential Building Damage*, prepared for Hawkesbury-Nepean Floodplain Management Strategy Steering Committee.

Bowd, D.G., 1982, *Macquarie Country: A History of the Hawkesbury*, Library of Australian History, Sydney.

Bracewell, M.G. & McDermott, G.E., 1985, *The 1867 Flood*, Metropolitan Water Sewage and Drainage Board.

Clarke, S. & Tickle, L. (Dept of Actuarial Studies, Macquarie University), May 2001, *Household Financial Flood Risk Investigation*, prepared for Hawkesbury-Nepean Floodplain Management Strategy Steering Committee.

Coates, L., 1999. *Flood Fatalities in Australia 1788-1996*. Australian Geographer, Vol 70, No3.

Colmar Brunton Social Research, July 1999, *Implications of Research for Communication Strategy*, prepared for Hawkesbury-Nepean Floodplain Management Strategy Steering Committee.

CoA (Commonwealth of Australia), June 2011, *Natural Disaster Insurance Review: Inquiry into Flood Insurance and Related Matters*. Accessed from www.ndir.gov.au, 1 July 2011.

Connell Wagner, June 2002, *Windsor Flood Evacuation Route Across South Creek Environmental Impact Statement*, prepared for NSW Roads and Traffic Authority.

CSIRO/BOM, March 2010, *State of the Climate*.

Danielson & Associates, Patterson Britton & Partners and Masson & Wilson Pty Ltd, September 1997, *Emergency Response Planning and Traffic Infrastructure*, prepared for Hawkesbury-Nepean Flood Management Advisory Committee.

DECC (Department of Environment and Climate Change), October 2007, *Practical Consideration of Climate Change: Floodplain Risk Management Guideline*.

DECC (Department of Environment and Climate Change), October 2007, *Residential Flood Damages: Floodplain Risk Management Guideline*.

DECCW (Department of Environment, Climate Change and Water NSW), 2007, *Flood Emergency Response Planning – Classification of Communities*, Flood Risk Management Guidelines prepared by the NSW Department of Environment, Climate Change and Water. Version 1.01.

DECCW (Department of Environment, Climate Change and Water NSW), October 2009, *NSW Sea Level Rise Policy Statement*.

DECCW (Department of Environment, Climate Change and Water NSW), August 2010, *Flood Risk Management Guide: Incorporating Sea Level Rise Benchmarks in Flood Risk Assessments*.

DLWC, April 2000, *HNFMS Interim Regional Road Upgrade Plan*.

DoP (Department of Planning), August 2010, *NSW Coastal Planning Guideline: Adapting to Sea Level Rise*.

Dovetail Planning Pty Ltd, July 2000, *Regional Public Awareness Program*, prepared for Hawkesbury-Nepean Floodplain Management Strategy Steering Committee.

Egan National Valuers, July 2000, *Valuation Study: Assessment of the impact of planning controls and public notifications regarding flood risk upon property values*, prepared for Hawkesbury-Nepean Floodplain Management Strategy Steering Committee.

ERM Mitchell McCotter, July 1995, *Proposed Warragamba Flood Mitigation Dam Environmental Impact Statement* (3 vols.), prepared for Sydney Water.

ERM Mitchell McCotter, November 1996, *Proposed Warragamba Dam Auxiliary Spillway Environmental Impact Statement* (4 vols.), prepared for Sydney Water.

Erskine, W.D. & Warner, R.F., 1998, 'Further assessment of flood- and drought-dominated regimes in South-eastern Australia', *Australian Geographer*, 29(2), 257-261.

Estuaries Branch, 2010, 'Estuaries in NSW: Physical Characteristics and Behaviour'. Accessed from www.dnr.nsw.gov.au/estuaries/factsheets/physical/limits.shtml, 1 March 2011.

FEAC (Flood Education Advisory Committee), 2006, *Community Flood Education Strategy 2006: Building Community Capacity for Flood Safety in Maitland and the Hunter Valley*, Hunter-Central Rivers Catchment Management Authority/SES.

GHD and Cox Consulting, August 2001, *Analysis of Community Attitudes to Flood Related Risks* (2 vols.), prepared for Hawkesbury-Nepean Floodplain Management Strategy Steering Committee.

Hawkesbury-Nepean Valley Flood Awareness Committee, January 1994, *Hawkesbury-Nepean Valley Flood Level Information*.

Hawkesbury-Nepean Flood Management Advisory Committee, November 1997, *Achieving a Hawkesbury-Nepean Floodplain Management Strategy*.

Hawkesbury-Nepean Flood Management Advisory Committee, July 1998, *Supplementary Report: Responses to the Public Exhibition of the Committee's November 1997 Report "Achieving a Hawkesbury-Nepean Floodplain Management Strategy"*.

Higson, D.J., 1990, *Risks to Individuals in NSW and Australia as a Whole*, ANSTO.

HNFMSC (Hawkesbury-Nepean Floodplain Management Steering Committee), October 2004, *Hawkesbury-Nepean Floodplain Management Strategy Implementation: Reporting the achievements of the Hawkesbury-Nepean Floodplain Management Steering Committee (1998-2004)*.

HNFMSC (Hawkesbury-Nepean Floodplain Management Steering Committee), June 2006, *Managing Flood Risk through Planning Opportunities: Guidance on Land Use Planning in Flood Prone Areas*, HNFMSC, Parramatta.

HNFMSC (Hawkesbury-Nepean Floodplain Management Steering Committee), June 2006, *Designing Safer Subdivisions: Guidance in Subdivision Design in Flood Prone Areas*, HNFMSC, Parramatta.

HNFMSC (Hawkesbury-Nepean Floodplain Management Steering Committee), June 2006, *Reducing Vulnerability of Buildings to Flood Damage: Guidelines on Building in Flood Prone Areas*, HNFMSC, Parramatta.

HNFMSC (Hawkesbury-Nepean Floodplain Management Strategy), June 2003, *Flood Hazard Definition Tool: Hawkesbury-Nepean River Specific Information Manual (Draft)*.

Josephson, J.P., 1885, 'History of floods in the Hawkesbury River', *Journal of the Royal Society of New South Wales*, 19, 97-107.

Keys, C., 2002, 'A combat agency and its hazard: a New South Wales State Emergency Service perspective on the management of flooding', *The Australian Journal of Emergency Management*, 17(2), 14-18, 50-55. [www.ema.gov.au/]

Keys, C., 2008, *Maitland, City on the Hunter: Fighting floods or living with them?*, Hunter-Central Rivers Catchment Management Authority, Paterson.

Kiem, A., Franks, S. & Verdon, D., 2006, 'Climate variability in the land of fire and flooding rain', *The Australian Journal of Emergency Management*, 21(2), 52-56.

Kirkup, H., Brierley, G., Brooks, A. & Pitman, A., 1998, 'Temporal variability of climate in South-eastern Australia: a reassessment of flood- and drought-dominated regimes', *Australian Geographer*, 29(2), 241-255.

Masson & Wilson Pty Ltd, August 1997, *Roads and Traffic Infrastructure Investigation*, prepared for the Hawkesbury-Nepean Flood Management Advisory Committee.

MHL (Manly Hydraulics Laboratory), September 2006, *Survey of Tidal Limits and Mangrove Limits in NSW Estuaries 1996 to 2005*, Report No. MHL1286, prepared for the NSW Department of Natural Resources.

Middleman-Fernandes, M.H., 2010, 'Flood damage estimation beyond stage-damage functions: an Australian example', *Journal of Flood Risk Management*, 3, 88-96.

Molino, S., Begg, S., Stewart, L. & Oppen, S., March 2002, 'Bells and whistles, belts and braces: designing an integrated flood warning system for the Hawkesbury-Nepean Valley. Part 1: bells and whistles—available technologies', *Australian Journal of Emergency Management*, 17(1), 55-59.

Molino, S., Begg, S., Stewart, L. & Oppen, S., August 2002, 'Bells and whistles, belts and braces: designing an integrated flood warning system for the Hawkesbury-Nepean Valley. Part 2', *Australian Journal of Emergency Management*, 17(2), 40-49.

Molino, S. & Huybrechts, J. 2004, 'Do education strategies sink and communities swim? Evaluation of the Woronora Preparedness Strategy five years on', *Australian Journal of Emergency Management*, 19(2), 33-34.

Molino Stewart, September 1997, *Hawkesbury-Nepean River Impacts of Flooding on Communities and Infrastructure*, prepared for HNFMSC.

Molino Stewart, August 2000, *Improving Preparedness of Utility Providers Discussion Paper*, prepared for Hawkesbury-Nepean Floodplain Management Strategy Steering Committee (Draft).

Molino Stewart, November 2007, *Pitt Town Flood Risk Management Review*, prepared for Johnson Property Group.

Molino Stewart, November 2007, *Potential Bligh Park North Flood Evacuation via Windsor*, prepared for Modog Developments.

Molino Stewart, July 2010, *May 2009 East Coast Low Flood Warning Community Feedback Report*, prepared for NSW SES.

Molino Stewart, March 2011a, *Hawkesbury Floodplain Risk Management Plan – Evacuation*. First draft report, prepared for Bewsher Consulting Pty Ltd on behalf of Hawkesbury City Council.

Molino Stewart, April 2011b, *Hawkesbury Nepean River Impacts of Flooding on Communities and Infrastructure Review*, Draft, prepared for NSW SES.

Molino Stewart, June 2011c, *Hawkesbury Floodplain Risk Management Plan – Evacuation*. Second draft report, prepared for Bewsher Consulting Pty Ltd on behalf of Hawkesbury City Council.

Nadimpalli, K., Edwards, M. & Mullaly, D., 2007, 'National Exposure Information System (Nexis) for Australia: Risk Assessment Opportunities', paper presented at Modelling and Simulation Society of Australia and New Zealand Conference, December 2007.

Nichols, M., 2001, *Disastrous Decade: Flood and Fire in Windsor 1864-1874*, Deerubbin Press, Berowra Heights (NSW).

NSW SES, April 2002, *Pitt Town Local Environmental Study Flood Emergency Risk Management: An Analysis of Urban Growth Impact*.

NSW SES, June 2002, Emergency Risk Management for Hawkesbury-Nepean Flooding. In Connell Wagner Pty Ltd, *Windsor Flood Evacuation Route, South Creek Environmental Impact Statement, Volume 2 Working Papers, Working Paper 11*.

NSW Treasury, July 2007, *NSW Government Guidelines for Economic Appraisal*, Treasury Policy Paper 07-5.

NSW Treasury, July 2007, *Economic Appraisal Principles and Procedures Simplified*, Treasury Policy Paper 07-6.

Opper, S., May 2000, 'Emergency planning for the Hawkesbury-Nepean Valley. In *40th Annual Conference of the NSW Floodplain Management Authorities*, Parramatta, 9-12 May 2000, pp.109-115.

Opper, S. Cinque, P. & Davies, B., September 2009, 'Timeline modelling of flood evacuation operations'. In *First International Conference on Evacuation Modelling and Management, Den Haag, The Netherlands, 23-25 September 2009*.

Patterson Britton & Partners Pty Ltd, June 1993, *Towards a New Floodplain Planning Policy*, prepared for HCC.

Patterson Britton & Partners Pty Ltd, August 1997, *Emergency Response and Traffic Infrastructure Flood Impacts Assessment*, prepared for the Hawkesbury-Nepean Flood Management Advisory Committee.

Patterson Britton & Partners Pty Ltd in association with Masson Wilson Twiney, December 1998, *Hawkesbury-Nepean Flood Evacuation Route Optimisation Study*.

Patterson Britton & Partners Pty Ltd, July 2002, *Penrith Lakes Scheme: Report on Floodplain Management Issues*, prepared for Planning NSW.

Patterson Britton & Partners Pty Ltd, July 2004, *Hawkesbury-Nepean Flood Evacuation Routes Upgrade Review*, prepared for DIPNR.

PWD, August 1994, *Floodplain Management Issues in the Hawkesbury-Nepean Valley – Summary of Workshop Proceedings*.

Riley, S.J., 1981, 'The relative influence of dams and secular climatic change on downstream flooding, Australia', *Water Resources Bulletin*, 17(3), 361-366.

Saynor, M.J. & Erskine, W.D., 1993, 'Characteristics and implications of high-level slackwater deposits in the Fairlight Gorge, Nepean River, Australia', *Australian Journal of Marine and Freshwater Research*, 44(5), 735-747.

SEMC (State Emergency Management Committee), December 2005, *Hawkesbury Nepean Flood Emergency Sub Plan - A Sub Plan of NSW DISPLAN*.

SMEC, December 2000, *Windsor Road and McGraths Hill Local Hydraulics Specification Study*, prepared for DLWC.

Standing Committee on Agriculture and Resource Management (SCARM), Agriculture and Resource Council of Australia and New Zealand, 2000, *Floodplain Management Australia – Best Practice Principles and Guidelines*.

Stubbs, R., n.d., 'The Hawkesbury: early settlement'. In *Sydney's North-west Sector: Learning from History?*, Accessed from www.hawkesburyhistory.org.au/stubbs/leaning.html 14 January 2011.

Stubbs, R., n.d., 'Town planning and the Macquarie towns'. In *Sydney's North-west Sector: Learning from History?*, Accessed from www.hawkesburyhistory.org.au/stubbs/leaning.html 14 January 2011.

Walker, W., 1887, *An Account of the Great Flood at the Hawkesbury, June 1867: reprinted by permission from the Sydney Morning Herald and revised by William Walker*, Windsor, Turner and Henderson, Sydney.

Wallace, S, Dearnley, C and Huxley, C, February 2010. *Evacuation for Everyone: Integrating Flood Models and Evacuation Timelines*. Paper presented to the 50th Annual Floodplain Management Authorities Conference. Gosford NSW. 2010

Warner, R.F., 2009, 'Secular regime shifts, global warming and Sydney's water supply', *Geographical Research*, 47(3), 227-241.

Westra, S., Varley, I., Jordan, P., Nathan, R., Ladson, A., Sharma, A. & Hill, P., 2010, 'Addressing climatic non-stationarity in the assessment of flood risk', *Australian Journal of Water Resources*, 14(1), 1-16.

WMA (Webb, McKeown & Associates Pty Ltd), October 1996, *Proposed Warragamba Dam Auxiliary Spillway EIS Flood Study* (5 vols), prepared for Sydney Water.

WMA (Webb, McKeown & Associates Pty Ltd), September 1997, *Engineering Studies to Modify Flood Behaviour*, prepared for Hawkesbury-Nepean Floodplain Management Strategy Steering Committee.

WMA (Webb, McKeown & Associates Pty Ltd), November 1999, *Hawkesbury Flood & Hazard Mapping: Conversion of Flood Study Data & Hawkesbury DTM* (CD).

WMAwater, July 2009, *Assessment of Potential Impact of Climate Change on Flooding in the Hawkesbury-Nepean River*, prepared for DECC.

Yeo, S., 2003, 'Effects of disclosure of flood-liability on residential property values', *Australian Journal of Emergency Management*, 18(1), 35-44.

Yeo, S. & Grech, P., 2006, 'Flood-prone caravan parks in New South Wales – is the system failing?', *Australian Journal of Emergency Management*, 21(3), 12-21.