

11A Economic participation and development — attachment

The tables in this file accompany the Report, *Overcoming Indigenous Disadvantage: Key Indicators 2007*, prepared by the Steering Committee for the Review of Government Service Provision. Background and definitions are available in the Report, which is available on the Review website (www.pc.gov.au/gsp).

This file is available in both Microsoft Excel and Adobe PDF formats on the Review website (www.pc.gov.au/gsp). Users without Internet access can contact the Secretariat to obtain these tables (details inside the front cover of the Report).

Contents

11A.1 Employment (full-time/part-time) by sector (public/private), industry and occupation

Table 11A.1.1	Employment by remoteness area and CDEP status, Indigenous people aged 18–64 years, 2004-05
Table 11A.1.2	Full time and part time employment, people aged 18–64 years, by State and Territory, 2004-05, age standardised
Table 11A.1.3	Full time and part time employment by CDEP status, Indigenous people aged 18–64 years, 2004-05
Table 11A.1.4	Employment of Indigenous people aged 18 to 64 years, 1994, 2002, 2004-05
Table 11A.1.5	Full time and part time employment, Indigenous people aged 18–64 years, by sex, age and State and Territory, 2004-05
Table 11A.1.6	Employment by sector, people aged 18–64 years, age standardised, 2004-05
Table 11A.1.7	Employment by sector, Indigenous people aged 18–64 years, 2004-05
Table 11A.1.8	Employment by industry, Indigenous people aged 18–64 years, age standardised, 2004-05
Table 11A.1.9	Employment by industry, non-Indigenous people aged 18–64 years, age standardised, 2004-05
Table 11A.1.10	Occupation skill levels of people aged 18–64 years, 2004-05, age standardised

11A.2 Self employment and Indigenous business

Table 11A.2.1	Self employment of people aged 18–64 years in non-remote areas, age standardised
----------------------	--

11A.3 Indigenous owned or controlled land

Table 11A.3.1	Indigenous owned or controlled land by State/Territory, December 2006
Table 11A.3.2	Indigenous owned or controlled land by remoteness area, December 2006
Table 11A.3.3	Determinations of native title by State/Territory/Commonwealth
Table 11A.3.4	Determinations of native title by remoteness area
Table 11A.3.5	Registered Indigenous land use agreements by State/Territory
Table 11A.3.6	Registered Indigenous land use agreements by remoteness area
Table 11A.3.7	Determinations of native title, at 30 June 2006
Table 11A.3.8	Determinations of native title at 30 June 2006 mapped against ABS remoteness areas
Table 11A.3.9	Registered Indigenous land use agreements, at 30 June 2006
Table 11A.3.10	Registered Indigenous land use agreements at 30 June 2006 mapped against ABS remoteness areas
Table 11A.3.11	Land purchased by the Indigenous Land Corporation, as at 29 March 2007

11A.4 Governance capacity and skills

Table 11A.4.1	Number of students studying management, commerce, business law, economics and econometrics, by State and Territory
Table 11A.4.2	Number of students studying management, commerce, business law, economics and econometrics, by remoteness
Table 11A.4.3	Number of students studying management, commerce, business law, economics and econometrics, by age
Table 11A.4.4	Total number of students, by State and Territory

Contents

Table 11A.4.5	Total number of students, by remoteness
Table 11A.4.6	Total number of students, by age
Table 11A.4.7	Number of students in selected governance courses
Table 11A.4.8	Students of governance-related courses: management, commerce, business law, economics and econometrics

Table 11A.1.1

Table 11A.1.1 Employment by remoteness area and CDEP status, Indigenous people aged 18–64 years, 2004-05 (a)

	<i>Unit</i>	<i>CDEP</i>	<i>Non-CDEP</i>	<i>Total employed (b)</i>
Major cities				
Estimate	'000	1.7	40.9	42.6
Proportion of total employed	%	4.0	96.0	100.0
Inner regional				
Estimate	'000	1.4	25.6	27.0
Proportion of total employed	%	5.2	94.8	100.0
Outer regional				
Estimate	'000	5.0	21.9	27.0
Proportion of total employed	%	18.7	81.3	100.0
Total non-remote				
Estimate	'000	8.2	88.5	96.6
Proportion of total employed	%	8.5	91.5	100.0
Remote				
Estimate	'000	2.8	8.5	11.3
Proportion of total employed	%	24.7	75.3	100.0
Very remote				
Estimate	'000	18.1	8.5	26.6
Proportion of total employed	%	68.0	32.0	100.0
Total remote				
Estimate	'000	20.8	17.0	37.8
Proportion of total employed	%	55.0	45.0	100.0
Australia				
Estimate	'000	29.4	105.1	134.5
Proportion of total employed	%	21.8	78.2	100.0

(a) Estimates with a relative standard error of between 25 per cent to 50 per cent should be used with caution. Estimates with a relative standard error greater than 50 per cent are considered too unreliable for general use.

(b) Total includes CDEP status not known.

Source: ABS National Aboriginal and Torres Strait Islander Health Survey 2004-05, Cat. no. 4715.0.55.005 (unpublished).

Table 11A.1.2

Table 11A.1.2 Full time and part time employment, people aged 18–64 years, by State and Territory, 2004-05, age standardised (a)

State/Territory	Indigenous			Non-Indigenous		
	Full time		Part time	Full time		Part time
	Proportion of labour force (%)	RSE (%)		Proportion of labour force (%)	RSE (%)	Proportion of labour force (%)
NSW	60.6	6.7	29.3	70.2	1.4	25.9
Vic	58.1	15.7	32.1	66.9	1.6	29.3
Qld	54.8	5.8	32.8	68.7	1.5	27.3
WA	45.6	9.6	42.5	68.2	2.0	28.2
SA	51.6	9.7	39.3	65.1	1.8	31.5
Tas	52.5	9.0	32.2	64.0	3.0	31.0
ACT	71.0	6.5	21.9	70.7	2.0	26.4
NT (b)	np	np	np	np	np	np
Australia	53.6	3.3	35.4	68.5	0.7	27.7
Sex						
Males	65.3	3.3	24.2	83.3	0.6	12.9
Females	39.8	6.1	48.7	50.2	1.7	46.1
Persons	53.6	3.3	35.4	68.5	0.7	27.7
Remoteness						
Major cities	58.8	5.6	33.5	69.2	1.0	27.2
Inner regional	61.1	8.3	26.4	65.9	1.6	30.1
Outer regional	55.9	6.5	30.1	68.8	2.1	26.0
Total non-remote	58.7	3.8	30.4	68.5	0.7	27.7

OVERCOMING INDIGENOUS
DISADVANTAGE: KEY
INDICATORS 2007

ATTACHMENT
TABLES

Table 11A.1.2

Table 11A.1.2 Full time and part time employment, people aged 18–64 years, by State and Territory, 2004-05, age standardised (a)

	Indigenous			Non-Indigenous		
	Full time		Part time	Full time		Part time
	Proportion of labour force (%)	RSE (%)	Proportion of labour force (%)	RSE (%)	Proportion of labour force (%)	RSE (%)
Remote	54.4	9.5	34.7	15.9	68.9	4.9
Very remote (c)	na	na	na	na	na	na
Total remote
Australia	53.6	3.3	35.4	4.6	68.5	0.7
Age						
18-24	43.8	7.0	34.7	8.2	56.1	2.9
25-34	53.8	4.6	33.9	7.3	74.8	1.3
35-44	52.3	4.5	38.5	6.2	68.5	1.4
45-54	61.7	5.9	29.2	10.9	73.2	1.3
55-64	53.5	13.1	42.7	16.8	64.5	2.0
Total Non AS 18-64	55.2	2.9	34.9	3.9	68.6	0.7
Total AS 18-64	53.6	3.3	35.4	4.6	68.5	0.7

AS=Age standardised. RSE=Relative standard error.

(a) Estimates with a relative standard error of between 25 per cent to 50 per cent should be used with caution. Estimates with a relative standard error greater than 50 per cent are considered too unreliable for general use.

(b) The sample size in the NT was considered too small to produce reliable estimates for the NT in the ABS 2004-05 NHS, but NT records in the survey have been attributed appropriately to national estimates.

(c) Age standardised Indigenous data for the very remote area are not provide by the ABS as non-Indigenous data for the very remote area are not available (they were not collected in the 2004-05 NHS). The records for the very remote areas have been attributed appropriately to national estimates.

.. Not applicable; **na** Not available; **np** Not available for publication but included in total where applicable, unless otherwise indicated.Source: ABS *National Aboriginal and Torres Strait Islander Health Survey 2004-05*, Cat. no. 4715.0.55.005 (unpublished); ABS *National Health Survey 2004-05*, Cat. no. 4362.0 (unpublished).OVERCOMING INDIGENOUS
DISADVANTAGE: KEY
INDICATORS 2007ATTACHMENT
TABLES

Table 11A.1.3

Table 11A.1.3 Full time and part time employment by CDEP status, Indigenous people aged 18–64 years, 2004-05 (a)

State/Territory	Full-time						Part-time					
	CDEP			Non-CDEP			CDEP			Non-CDEP		
	Proportion of labour force (%)	RSE (%)	Proportion of labour force (%)	RSE (%)	Proportion of labour force (%)	RSE (%)	Proportion of labour force (%)	RSE (%)	Proportion of labour force (%)	RSE (%)	Proportion of labour force (%)	RSE (%)
NSW	0.7	46.3	56.5	6.0	57.2	5.9	7.2	26.1	22.8	11.8	30.1	10.1
Vic	1.8	55.1	49.0	11.9	50.8	11.4	4.1	33.6	32.6	19.4	36.8	15.8
Qld	4.8	17.5	51.8	5.6	56.6	4.8	10.4	15.9	19.9	12.9	30.3	8.7
WA	6.9	21.0	35.2	10.4	42.0	7.5	28.9	11.5	15.4	20.4	44.3	8.2
SA	3.6	33.9	45.4	9.1	49.1	8.5	20.0	16.7	19.8	16.0	39.7	9.4
Tas	–	–	51.0	7.8	51.0	7.8	np	np	31.0	13.3	31.7	12.9
ACT	–	–	71.7	5.6	71.7	5.6	np	np	18.5	20.1	19.6	19.2
NT	13.8	19.5	28.0	10.8	41.8	9.7	35.7	12.7	10.9	14.4	46.5	9.2
Australia	4.4	10.7	47.8	3.2	52.2	2.9	14.6	7.0	20.3	6.1	34.9	3.9
Sex												
Males	4.5	13.6	58.5	3.2	63.0	2.7	14.4	9.1	10.0	10.9	24.4	5.9
Females	4.4	16.9	34.4	5.8	38.8	5.3	14.8	9.4	33.2	6.9	48.0	4.5
Persons	4.4	10.7	47.8	3.2	52.2	2.9	14.6	7.0	20.3	6.1	34.9	3.9
Remoteness												
Major cities	0.7	43.1	58.3	4.6	59.0	4.5	2.9	26.8	28.1	9.8	31.0	8.5
Inner regional	0.8	44.2	56.2	7.2	57.0	7.0	3.6	33.3	23.8	14.1	27.4	13.8
Outer regional	4.1	23.2	49.4	6.2	53.4	5.5	11.6	20.3	18.6	12.7	30.2	9.3
Total non-remote	1.7	19.7	55.1	3.4	56.8	3.2	5.6	14.7	24.1	6.6	29.7	5.6

OVERCOMING INDIGENOUS
DISADVANTAGE: KEY
INDICATORS 2007

ATTACHMENT
TABLES

Table 11A.1.3

Table 11A.1.3 Full time and part time employment by CDEP status, Indigenous people aged 18–64 years, 2004-05 (a)

	Full-time						Part-time					
	CDEP			Non-CDEP			CDEP			Non-CDEP		
	Proportion of labour force (%)	RSE (%)	Proportion of labour force (%)	RSE (%)	Proportion of labour force (%)	RSE (%)	Proportion of labour force (%)	RSE (%)	Proportion of labour force (%)	RSE (%)	Proportion of labour force (%)	RSE (%)
Remote	4.8	31.8	47.8	9.4	52.5	8.0	16.8	26.2	18.0	27.2	34.8	13.5
Very remote	14.7	12.6	20.1	13.2	34.8	8.1	47.3	7.4	7.2	15.2	54.5	5.5
Total remote	11.7	12.0	28.5	8.0	40.2	5.8	38.0	7.4	10.5	16.9	48.5	4.9
Australia	4.4	10.7	47.8	3.2	52.2	2.9	14.6	7.0	20.3	6.1	34.9	3.9
Age												
18-24	3.7	23.6	40.1	7.8	43.8	7.0	15.2	12.5	19.5	12.9	34.7	8.2
25-34	5.5	18.9	48.3	5.1	53.8	4.6	15.9	10.0	18.0	13.1	33.9	7.3
35-44	3.7	18.9	48.6	4.9	52.3	4.5	14.7	12.2	23.8	10.5	38.5	6.2
45-54	4.7	21.2	57.0	6.5	61.7	5.9	11.3	16.2	17.9	14.4	29.2	10.9
55-64	5.4	37.5	48.2	14.0	53.5	13.1	13.0	24.7	29.7	23.3	42.7	16.8
Total 18-64	4.4	10.7	47.8	3.2	52.2	2.9	14.6	7.0	20.3	6.1	34.9	3.9

RSE=Relative standard error.

(a) Estimates with a relative standard error of between 25 per cent to 50 per cent should be used with caution. Estimates with a relative standard error greater than 50 per cent are considered too unreliable for general use.

– Nil or rounded to zero (including null cells); np Not available for publication but included in total where applicable, unless otherwise indicated.

Source: ABS National Aboriginal and Torres Strait Islander Health Survey 2004-05, Cat. no. 4715.0.55.005 (unpublished).

Table 11A.1.4

Table 11A.1.4 Employment of Indigenous people aged 18 to 64 years, 1994, 2002, 2004-05 (a)

	Full time employment			Part time employment			Total in labour force		
	Estimate ('000)	Proportion of labour force (%)	RSE (%)	Estimate ('000)	Proportion of labour force (%)	RSE (%)	Estimate ('000)	Proportion of labour force (%)	RSE (%)
1994									
Males	32.6	50.1	4.1	11.7	18.0	8.5	65.1	100.0	—
Females	14.1	35.3	8.1	15.1	37.9	6.6	39.8	100.0	—
Total	46.6	44.5	3.9	26.8	25.5	6.0	104.9	100.0	—
2002									
Males	43.3	50.0	3.6	25.2	29.0	6.0	86.7	100.0	—
Females	23.2	34.8	5.5	30.5	45.7	4.6	66.7	100.0	—
Total	66.5	43.4	3.1	55.6	36.3	4.2	153.4	100.0	—
2004-05									
Males	53.9	63.0	2.7	20.8	24.4	5.9	85.4	100.0	—
Females	26.7	38.8	5.3	33.1	48.0	4.5	68.9	100.0	—
Total	80.6	52.2	2.9	53.9	34.9	3.9	154.3	100.0	—

RSE=Relative standard error.

(a) Estimates with a relative standard error of between 25 per cent to 50 per cent should be used with caution. Estimates with a relative standard error greater than 50 per cent are considered too unreliable for general use.

— Nil or rounded to zero (including null cells).

Source: ABS 1994 NATSIS (unpublished); ABS 2002 NATSISS (unpublished); ABS National Aboriginal and Torres Strait Islander Health Survey 2004-05, Cat. no. 4715.0.55.005 (unpublished).

Table 11A.1.5

Table 11A.1.5 Full time and part time employment, Indigenous people aged 18–64 years, by sex, age and State and Territory, 2004-05 (a)

	<i>Full time</i>			<i>Part time</i>		
	<i>Estimate ('000)</i>	<i>Proportion of labour force (%)</i>	<i>RSE (%)</i>	<i>Estimate ('000)</i>	<i>Proportion of labour force (%)</i>	<i>RSE (%)</i>
Male						
<i>State/Territory</i>						
NSW	17.4	72.4	5.0	4.1	17.0	17.3
Vic	3.7	63.7	12.5	1.2	20.3	33.5
Qld	17.4	67.7	4.8	5.2	20.1	13.7
WA	6.1	50.0	8.2	4.2	34.1	14.1
SA	2.2	49.0	11.9	1.7	38.0	14.2
Tas	2.1	66.3	6.6	0.6	20.1	17.9
NT	4.2	46.3	11.5	3.8	41.6	13.7
ACT	0.7	79.8	7.6	0.1	14.5	37.0
Australia	53.9	63.0	2.7	20.8	24.4	5.9
<i>Age</i>						
18-24	10.5	51.1	8.1	5.6	27.5	11.9
25-34	17.3	63.7	4.5	6.5	23.8	10.2
35-44	14.6	66.7	4.2	5.4	24.6	10.7
45-54	9.4	73.1	6.5	2.5	19.5	20.3
55-64	2.1	68.2	10.1	0.8	27.3	23.6
Total 18-64	53.9	63.0	2.7	20.8	24.4	5.9
Female						
<i>State/Territory</i>						
NSW	7.8	38.9	11.3	9.2	45.9	10.3
Vic	1.6	34.8	22.1	2.7	57.1	16.0
Qld	8.1	41.8	10.6	8.5	43.9	10.7
WA	3.2	32.3	16.0	5.7	56.9	9.8
SA	1.8	49.2	12.6	1.5	42.0	13.3
Tas	0.7	30.9	18.7	1.1	47.1	15.6
NT	3.0	36.8	12.6	4.2	52.1	9.5
ACT	0.5	62.4	8.5	0.2	25.5	19.8
Australia	26.7	38.8	5.3	33.1	48.0	4.5
<i>Age</i>						
18-24	5.7	34.8	11.3	7.2	43.6	10.4
25-34	7.7	39.9	10.3	9.3	47.9	9.1
35-44	6.8	35.6	9.3	10.4	54.6	6.6
45-54	5.2	48.1	9.6	4.4	40.7	10.5
55-64	1.3	39.6	24.6	1.8	57.4	17.4
Total 18-64	26.7	38.8	5.3	33.1	48.0	4.5

Table 11A.1.5

Table 11A.1.5 Full time and part time employment, Indigenous people aged 18–64 years, by sex, age and State and Territory, 2004-05 (a)

	<i>Full time</i>			<i>Part time</i>		
	<i>Estimate ('000)</i>	<i>Proportion of labour force (%)</i>	<i>RSE (%)</i>	<i>Estimate ('000)</i>	<i>Proportion of labour force (%)</i>	<i>RSE (%)</i>
Persons						
<i>State/Territory</i>						
NSW	25.2	57.2	5.9	13.2	30.1	10.1
Vic	5.4	50.8	11.4	3.9	36.8	15.8
Qld	25.5	56.6	4.8	13.7	30.3	8.7
WA	9.3	42.0	7.5	9.8	44.3	8.2
SA	3.9	49.1	8.5	3.2	39.7	9.4
Tas	2.8	51.0	7.8	1.8	31.7	12.9
NT	7.2	41.8	9.7	8.0	46.5	9.2
ACT	1.2	71.7	5.6	0.3	19.6	19.2
Australia	80.6	52.2	2.9	53.9	34.9	3.9
<i>Age</i>						
18-24	16.2	43.8	7.0	12.8	34.7	8.2
25-34	25.0	53.8	4.6	15.8	33.9	7.3
35-44	21.4	52.3	4.5	15.8	38.5	6.2
45-54	14.6	61.7	5.9	6.9	29.2	10.9
55-64	3.3	53.5	13.1	2.6	42.7	16.8
Total 18-64	80.6	52.2	2.9	53.9	34.9	3.9

RSE=Relative standard error.

(a) Estimates with a relative standard error of between 25 per cent to 50 per cent should be used with caution. Estimates with a relative standard error greater than 50 per cent are considered too unreliable for general use.

Source: ABS *National Aboriginal and Torres Strait Islander Health Survey 2004-05*, Cat. no. 4715.0.55.005 (unpublished).

Table 11A.1.6

Table 11A.1.6 Employment by sector, people aged 18–64 years, age standardised, 2004-05 (a)

	<i>Indigenous</i>				<i>Non-Indigenous</i>		
	<i>Unit</i>	<i>Public</i>	<i>Private</i>	<i>Total employed (b)</i>	<i>Public</i>	<i>Private</i>	<i>Total employed (b)</i>
<i>State/Territory</i>							
NSW							
Proportion of labour force	%	29.9	57.9	89.9	17.6	77.4	96.1
RSE	%	11.0	6.7	2.8	5.1	1.3	0.5
Vic							
Proportion of labour force	%	20.5	69.7	90.2	12.4	81.4	96.2
RSE	%	24.3	6.7	3.4	5.3	1.0	0.5
Qld							
Proportion of labour force	%	35.7	51.9	87.6	16.7	79.0	96.0
RSE	%	10.9	7.6	2.6	5.6	1.2	0.5
WA							
Proportion of labour force	%	33.6	51.6	88.2	15.8	80.4	96.4
RSE	%	23.9	15.2	3.4	7.7	1.5	0.6
SA							
Proportion of labour force	%	25.5	63.6	90.9	16.6	77.8	96.6
RSE	%	15.1	7.4	3.1	4.7	1.3	0.5
Tas							
Proportion of labour force	%	22.9	61.9	84.8	20.7	74.3	95.0
RSE	%	17.6	6.8	4.1	6.9	2.1	0.9
ACT							
Proportion of labour force	%	54.3	38.0	92.8	43.1	53.1	97.1
RSE	%	10.3	13.7	3.3	3.8	3.1	0.6
NT (c)							
Proportion of labour force	%	np	np	np	np	np	np
RSE	%	np	np	np	np	np	np
Total							
Proportion of labour force	%	33.1	54.8	89.0	16.5	78.5	96.2
RSE	%	5.6	3.7	1.3	2.3	0.5	0.2
<i>Sex</i>							
Male							
Proportion of labour force	%	29.9	58.4	89.4	13.0	82.5	96.2
RSE	%	7.3	4.3	1.7	4.4	0.7	0.3
Female							
Proportion of labour force	%	37.0	50.2	88.5	20.9	73.4	96.3
RSE	%	7.0	5.3	1.5	3.1	1.0	0.3

Table 11A.1.6

Table 11A.1.6 Employment by sector, people aged 18–64 years, age standardised, 2004-05 (a)

	<i>Indigenous</i>				<i>Non-Indigenous</i>		
	<i>Unit</i>	<i>Public</i>	<i>Private</i>	<i>Total employed (b)</i>	<i>Public</i>	<i>Private</i>	<i>Total employed (b)</i>
Total							
Proportion of labour force	%	33.1	54.8	89.0	16.5	78.5	96.2
RSE	%	5.6	3.7	1.3	2.3	0.5	0.2
Remoteness areas							
Major cities							
Proportion of labour force	%	24.0	66.9	92.3	16.5	78.5	96.4
RSE	%	13.0	5.4	2.1	3.0	0.7	0.3
Inner regional							
Proportion of labour force	%	27.1	60.0	87.5	17.0	78.0	96.0
RSE	%	13.1	6.7	3.0	5.2	1.3	0.5
Outer regional							
Proportion of labour force	%	33.7	51.6	86.0	15.7	78.6	94.8
RSE	%	12.2	8.1	3.9	9.0	2.0	1.0
Total non-remote							
Proportion of labour force	%	27.7	60.5	89.0	16.5	78.4	96.2
RSE	%	6.7	3.6	1.7	2.3	0.6	0.2
Remote							
Proportion of labour force	%	38.3	49.1	89.1	17.6	79.9	97.6
RSE	%	18.3	14.6	3.4	17.6	4.0	1.3
Very remote (d)							
Proportion of labour force	%	na	na	na	na	na	na
RSE	%	na	na	na	na	na	na
Total remote (e)							
Proportion of labour force	%	46.6	40.8	89.2	17.6	79.9	97.6
RSE	%	10.1	11.6	1.6	17.6	4.0	1.3
Australia							
Proportion of labour force	%	33.1	54.8	89.0	16.5	78.5	96.2
RSE	%	5.6	3.7	1.3	2.3	0.5	0.2
Age							
18-24							
Proportion of labour force	%	20.7	56.3	78.5	8.2	83.8	92.6
RSE	%	12.9	5.8	3.1	10.4	1.3	0.9
25-34							
Proportion of labour force	%	32.2	53.9	87.7	14.8	79.3	95.7
RSE	%	7.9	5.5	1.9	5.0	1.1	0.6

Table 11A.1.6

Table 11A.1.6 Employment by sector, people aged 18–64 years, age standardised, 2004-05 (a)

	Indigenous				Non-Indigenous		
	Unit	Public	Private	Total employed (b)	Public	Private	Total employed (b)
35-44							
Proportion of labour force	%	37.1	52.9	90.8	19.1	76.9	97.1
RSE	%	7.3	5.8	1.5	4.3	1.1	0.4
45-54							
Proportion of labour force	%	36.9	53.1	90.9	20.6	75.5	97.5
RSE	%	8.5	6.0	2.3	4.6	1.3	0.4
55-64							
Proportion of labour force	%	34.9	60.1	96.2	17.2	78.8	97.3
RSE	%	18.1	11.0	2.1	6.4	1.7	0.5
Total Non AS 18-64							
Proportion of labour force	%	31.6	54.3	87.2	16.4	78.5	96.2
RSE	%	4.8	3.2	1.1	2.2	0.5	0.2
Total AS 18-64							
Proportion of labour force	%	33.1	54.8	89.0	16.5	78.5	96.2
RSE	%	5.6	3.7	1.3	2.3	0.5	0.2

RSE=Relative standard error.

(a) Estimates with a relative standard error of between 25 per cent to 50 per cent should be used with caution. Estimates with a relative standard error greater than 50 per cent are considered too unreliable for general use.

(b) Total includes not known.

(c) The sample size in the NT was considered too small to produce reliable estimates for the NT in the ABS 2004-05 NHS, but NT records in the survey have been attributed appropriately to national estimates.

(d) Age standardised Indigenous data for the very remote area are not provide by the ABS as non-Indigenous data for the very remote area are not available (they were not collected in the 2004-05 NHS). The records for the very remote areas have been attributed appropriately to national estimates.

(e) Total remote is not comparable between the Indigenous and non-Indigenous population.

na Not available; **np** Not available for publication but included in total where applicable, unless otherwise indicated.

Source: ABS *National Aboriginal and Torres Strait Islander Health Survey 2004-05*, Cat. no. 4715.0.55.005 (unpublished); ABS *National Health Survey 2004-05*, Cat. no. 4362.0 (unpublished).

Table 11A.1.7

Table 11A.1.7 Employment by sector, Indigenous people aged 18–64 years, 2004-05 (a)

Sex	Unit	Public			Private			Total CDEP(b)	Total employed(b)	Total in the labour force		
		CDEP		Total	CDEP		Non-CDEP	Total	Total	Total		
		Non-CDEP	Total		Non-CDEP	Total						
Males	Estimate	'000	8.3	15.6	23.9	7.5	42.3	49.8	16.2	74.7	85.4	
	Proportion of labour force	%	9.7	18.3	28.0	8.8	49.6	58.3	19.0	87.4	100.0	
	RSE	%	12.8	6.6	6.0	13.3	4.2	3.6	7.7	1.4	—	
	Females	Estimate	'000	7.1	17.7	24.8	5.5	28.4	34.0	13.2	59.8	68.9
	Proportion of labour force	%	10.3	25.8	36.0	8.0	41.3	49.3	19.2	86.8	100.0	
	RSE	%	14.7	7.1	6.1	15.0	5.4	4.7	7.8	1.4	—	
	Total	Estimate	'000	15.3	33.4	48.7	13.0	70.8	83.8	29.4	134.5	154.3
	Proportion of labour force	%	9.9	21.6	31.6	8.4	45.9	54.3	19.0	87.2	100.0	
	RSE	%	12.0	5.0	4.8	12.3	3.5	3.2	6.1	1.1	—	
Remoteness areas	Major cities	Estimate	'000	0.5	10.0	10.4	0.9	30.5	31.4	1.7	42.6	47.4
	Proportion of labour force	%	1.0	21.1	22.0	1.9	64.3	66.2	3.6	90.0	100.0	
	RSE	%	40.7	10.9	10.6	28.1	4.5	4.4	22.6	1.7	—	
	Inner regional	Estimate	'000	0.2	8.2	8.4	1.1	17.3	18.4	1.4	27.0	32.0
	Proportion of labour force	%	0.6	25.7	26.3	3.4	54.1	57.6	4.4	84.4	100.0	
	RSE	%	65.1	11.3	11.1	34.7	6.4	5.7	28.6	2.6	—	

OVERCOMING INDIGENOUS
DISADVANTAGE: KEY
INDICATORS 2007

ATTACHMENT
TABLES

Table 11A.1.7

Table 11A.1.7 Employment by sector, Indigenous people aged 18–64 years, 2004-05 (a)

	Unit	Public			Private			Total CDEP(b)	Total employed(b)	Total in the labour force
		Non-CDEP		Total	CDEP		Non-CDEP	Total		
		CDEP	Non-CDEP	Total	CDEP	Non-CDEP	Total			
Outer regional										
Estimate	'000	2.3	8.0	10.3	2.6	13.8	16.4	5.0	27.0	32.3
Proportion of labour force	%	7.1	24.9	32.0	8.2	42.7	50.9	15.6	83.6	100.0
RSE	%	28.3	11.8	10.3	19.1	7.5	6.8	16.7	3.3	—
Total non-remote										
Estimate	'000	2.9	26.2	29.2	4.6	61.6	66.2	8.2	96.6	111.7
Proportion of labour force	%	2.6	23.5	26.1	4.2	55.1	59.3	7.3	86.6	100.0
RSE	%	23.8	5.9	5.6	14.4	3.3	3.0	12.7	1.4	—
Remote										
Estimate	'000	1.4	3.0	4.4	1.3	5.4	6.7	2.8	11.3	12.9
Proportion of labour force	%	10.6	23.2	33.8	10.2	41.6	51.8	21.5	87.3	100.0
RSE	%	45.9	14.3	15.6	24.6	16.5	12.4	25.1	2.8	—
Very remote										
Estimate	'000	11.0	4.2	15.2	7.1	3.8	10.9	18.1	26.6	29.8
Proportion of labour force	%	37.1	14.0	51.0	23.7	12.9	36.6	60.8	89.3	100.0
RSE	%	14.3	10.3	10.4	20.0	19.7	14.3	6.1	1.7	—
Total remote										
Estimate	'000	12.4	7.2	19.6	8.4	9.2	17.6	20.8	37.8	42.7
Proportion of labour force	%	29.1	16.8	45.8	19.6	21.6	41.2	48.7	88.7	100.0
RSE	%	13.6	8.4	8.9	17.2	13.6	10.3	6.4	1.4	—

OVERCOMING INDIGENOUS
DISADVANTAGE: KEY
INDICATORS 2007

ATTACHMENT
TABLES

Table 11A.1.7

Table 11A.1.7 Employment by sector, Indigenous people aged 18–64 years, 2004-05 (a)

		Unit		Public			Private			Total CDEP(b)	Total employed(b)	Total in the labour force
				CDEP	Non-CDEP	Total	CDEP	Non-CDEP	Total			
Australia												
Age	Estimate	'000	15.3	33.4	48.7	13.0	70.8	83.8	29.4	134.5	154.3	
	Proportion of labour force	%	9.9	21.6	31.6	8.4	45.9	54.3	19.0	87.2	100.0	
	RSE	%	12.0	5.0	4.8	12.3	3.5	3.2	6.1	1.1	—	
	18-24											
	Estimate	'000	3.5	4.2	7.7	3.1	17.7	20.8	7.0	29.0	36.9	
	Proportion of labour force	%	9.4	11.4	20.7	8.5	47.8	56.3	18.8	78.5	100.0	
	RSE	%	19.4	18.7	12.9	17.1	7.0	5.8	11.2	3.1	—	
	25-34											
	Estimate	'000	5.2	9.7	15.0	4.3	20.8	25.1	9.9	40.8	46.5	
	Proportion of labour force	%	11.2	20.9	32.2	9.2	44.7	53.9	21.4	87.7	100.0	
	RSE	%	14.6	9.7	7.9	19.2	6.4	5.5	8.8	1.9	—	
	35-44											
Estimate	'000	4.2	11.0	15.2	3.2	18.4	21.6	7.6	37.2	40.9		
Proportion of labour force	%	10.3	26.8	37.1	7.8	45.1	52.9	18.5	90.8	100.0		
RSE	%	16.1	8.5	7.3	20.7	6.8	5.8	10.4	1.5	—		
45-54												
Estimate	'000	1.8	6.9	8.8	1.9	10.7	12.6	3.8	21.6	23.7		
Proportion of labour force	%	7.6	29.2	36.9	8.1	45.0	53.1	16.0	90.9	100.0		
RSE	%	17.7	10.6	8.5	19.7	6.8	6.0	12.6	2.3	—		

OVERCOMING INDIGENOUS
DISADVANTAGE: KEY
INDICATORS 2007

ATTACHMENT
TABLES

Table 11A.1.7

Table 11A.1.7 Employment by sector, Indigenous people aged 18–64 years, 2004-05 (a)

		Unit	Public			Private			Total CDEP(b)	Total employed(b)	Total in the labour force
			CDEP	Non-CDEP	Total	CDEP	Non-CDEP	Total			
55-64											
Estimate	'000		0.6	1.6	2.2	0.5	3.2	3.7	1.1	6.0	6.2
Proportion of labour force	%		9.8	25.1	34.9	8.6	51.5	60.1	18.4	96.2	100.0
RSE	%		31.3	19.0	18.1	35.7	12.7	11.0	21.0	2.1	—
Total Non AS 18-64											
Estimate	'000		15.3	33.4	48.7	13.0	70.8	83.8	29.4	134.5	154.3
Proportion of labour force	%		9.9	21.6	31.6	8.4	45.9	54.3	19.0	87.2	100.0
RSE	%		12.0	5.0	4.8	12.3	3.5	3.2	6.1	1.1	—

RSE=Relative standard error.

(a) Estimates with a relative standard error of between 25 per cent to 50 per cent should be used with caution. Estimates with a relative standard error greater than 50 per cent are considered too unreliable for general use.

(b) Total includes employment sector not known.

– Nil or rounded to zero (including null cells).

Source: ABS *National Aboriginal and Torres Strait Islander Health Survey 2004-05*, Cat. no. 4715.0.55.005 (unpublished).

Table 11A.1.8

Table 11A.1.8 Employment by industry, Indigenous people aged 18–64 years, age standardised, 2004-05 (a)

	Government administration and defence	Health and community services	Personal and other services	Construction	Manufacturing	Retail trade	Property and business services	Education	Other industries (d)
As a proportion of total employed (%)									
<i>State/Territory</i>									
NSW	11.8	15.0	6.9	9.6	11.9	7.5	8.6	10.6	18.2
Vic	11.9	17.8	5.1	9.3	19.1	3.4	4.7	4.2	23.5
Qld	25.0	12.8	4.2	8.5	7.1	7.2	10.4	6.2	17.5
WA	10.5	13.5	17.5	4.6	6.5	5.0	10.6	7.6	23.2
SA	6.8	26.8	23.6	7.2	4.0	3.1	9.0	5.2	13.8
Tas	9.6	10.3	3.6	9.3	12.9	11.3	10.6	9.0	26.2
ACT	26.4	6.8	2.0	5.5	2.0	5.7	20.2	13.2	21.5
NT (b)	np	np	np	np	np	np	np	np	np
Australia	16.4	14.4	10.7	7.8	8.6	6.4	8.8	8.9	17.9
<i>Sex</i>									
Males	17.0	5.5	11.7	13.5	11.4	5.3	7.5	4.8	23.4
Females	15.7	25.0	9.8	0.9	5.1	7.8	10.0	13.9	11.9
Persons	16.4	14.4	10.7	7.8	8.6	6.4	8.8	8.9	17.9
<i>Remoteness</i>									
Major cities	11.7	16.2	7.3	8.3	12.1	5.6	13.6	7.0	18.2
Inner regional	9.6	15.6	6.2	9.3	11.9	8.3	7.5	8.5	23.1
Outer regional	16.9	15.6	7.5	11.3	9.5	6.6	5.3	11.2	16.0
Total non-remote	12.3	15.7	6.9	9.5	11.5	6.6	9.6	8.8	19.1
Remote	18.9	10.1	13.6	4.9	4.4	8.3	4.8	11.9	23.0
Very remote (c)	na	na	na	na	na	na	na	na	na
Total remote
Australia	16.4	14.4	10.7	7.8	8.6	6.4	8.8	8.9	17.9

OVERCOMING INDIGENOUS
DISADVANTAGE: KEY
INDICATORS 2007

ATTACHMENT
TABLES

Table 11A.1.8

Table 11A.1.8 Employment by industry, Indigenous people aged 18–64 years, age standardised, 2004-05 (a)

Age	Government administration and defence	Health and community services	Personal and other services	Construction	Manufacturing	Retail trade	Property and business services	Education	Other industries (d)
18-24	13.3	12.7	10.3	7.8	10.2	13.7	7.2	4.6	20.1
25-34	16.1	10.6	10.4	9.9	7.6	11.1	7.5	6.8	20.0
35-44	19.2	15.1	10.5	7.4	8.6	4.9	7.9	10.8	15.6
45-54	17.0	16.7	10.3	6.1	11.5	2.1	8.1	13.0	15.1
55-64	14.3	17.8	12.5	7.5	4.5	0.3	15.1	7.7	20.3
Total Non AS 18-64	16.4	13.6	10.5	8.0	8.9	8.0	8.0	8.5	18.0
Total AS 18-64	16.4	14.4	10.7	7.8	8.6	6.4	8.8	8.9	17.9
RSE (%)									
State/territory									
NSW	19.9	18.5	29.3	24.0	20.5	34.6	24.1	29.5	16.1
Vic	43.5	25.5	48.7	58.4	53.2	49.1	45.0	70.1	38.8
Qld	13.9	20.9	33.9	21.3	27.2	26.5	31.9	32.2	14.6
WA	32.9	24.7	21.4	41.6	35.2	52.5	22.4	43.2	18.2
SA	31.2	18.6	18.2	44.1	52.9	58.9	27.6	39.4	22.5
Tas	23.6	25.7	42.5	28.8	20.7	26.9	24.2	56.8	17.4
ACT	16.8	40.0	62.7	40.0	86.9	53.4	22.2	50.2	26.9
NT (b)	np	np	np	np	np	np	np	np	np
Australia	9.0	9.1	11.3	12.6	13.4	15.7	12.3	11.4	7.6

Table 11A.1.8

Table 11A.1.8 Employment by industry, Indigenous people aged 18–64 years, age standardised, 2004-05 (a)

	Government administration and defence	Health and community services	Personal and other services	Construction	Manufacturing	Retail trade	Property and business services	Education	Other industries (d)
Sex									
Males	12.4	15.9	13.1	13.0	15.7	26.3	15.6	19.3	9.8
Females	10.4	9.6	16.2	46.5	23.7	19.3	18.6	13.3	12.8
Persons	9.0	9.1	11.3	12.6	13.4	15.7	12.3	11.4	7.6
Remoteness									
Major cities	19.3	19.2	22.9	22.8	18.4	37.1	23.6	24.2	16.8
Inner regional	25.6	21.2	34.3	21.6	29.0	33.0	28.6	24.6	16.2
Outer regional	18.5	14.9	24.7	25.4	27.8	24.4	24.4	22.7	12.9
Total non-remote	11.7	11.2	15.6	13.7	14.0	19.0	15.6	14.2	9.1
Remote	32.8	26.7	36.4	40.4	42.0	42.9	35.4	25.5	19.9
Very remote (c)	na	na	na	na	na	na	na	na	na
Total remote
Australia	9.0	9.1	11.3	12.6	13.4	15.7	12.3	11.4	7.6
Age									
18-24	17.3	20.9	18.7	23.7	21.8	18.0	21.7	27.6	13.4
25-34	11.3	16.4	17.6	19.5	21.4	26.0	16.1	17.1	12.8
35-44	13.1	15.1	15.3	18.0	23.3	27.9	22.4	15.6	13.7
45-54	16.8	13.8	17.1	35.4	29.1	32.7	24.9	19.2	12.6
55-64	26.1	29.0	26.3	48.8	47.2	72.9	51.1	42.3	22.2
Total Non AS 18-64	7.8	8.0	9.9	11.0	11.7	13.7	10.8	10.0	6.7
Total AS 18-64	9.0	9.1	11.3	12.6	13.4	15.7	12.3	11.4	7.6

OVERCOMING INDIGENOUS
DISADVANTAGE: KEY
INDICATORS 2007

ATTACHMENT
TABLES

Table 11A.1.8

Table 11A.1.8 Employment by industry, Indigenous people aged 18–64 years, age standardised, 2004-05 (a)

Government administration and defence	Health and community services	Personal and other services	Construction	Manufacturing	Retail trade	Property and business services	Education	Other industries (d)
---	-------------------------------------	-----------------------------------	--------------	---------------	--------------	--------------------------------------	-----------	----------------------------

RSE=Relative standard error. AS=Age standardised.

(a) Estimates with a relative standard error of between 25 per cent to 50 per cent should be used with caution. Estimates with a relative standard error greater than 50 per cent are considered too unreliable for general use.

(b) The sample size in the NT was considered too small to produce reliable estimates for the NT in the ABS 2004-05 NHS, but NT records in the survey have been attributed appropriately to national estimates.

(c) Age standardised Indigenous data for the very remote area are not provide by the ABS as non-Indigenous data for the very remote area are not available (they were not collected in the 2004-05 NHS). The records for the very remote areas have been attributed appropriately to national estimates.

(d) Other industries include transport and storage; culture and recreational services; agriculture, forestry and fishing; accommodation, cafes and restaurants; finance and insurance; wholesale trade; communication services; mining; electricity, gas and water supply.

.. Not applicable; **na** Not available; **np** Not available for publication but included in total where applicable, unless otherwise indicated.

Source: ABS *National Aboriginal and Torres Strait Islander Health Survey 2004-05*, Cat. no. 4715.0.55.005 (unpublished).

Table 11A.1.9

Table 11A.1.9 Employment by industry, non-Indigenous people aged 18–64 years, age standardised, 2004-05 (a)

	Government administration and defence	Health and community services	Personal and other services	Construction	Manufacturing	Retail trade	Property and business services	Education	Other industries (d)
As a proportion of total employed (%)									
<i>State/Territory</i>									
NSW	5.4	10.4	3.5	9.0	9.5	14.2	13.0	5.5	29.4
Vic	3.9	10.6	3.2	7.4	13.1	14.3	12.7	6.7	28.1
Qld	5.3	9.4	3.0	9.9	10.5	14.1	12.1	6.4	29.1
WA	4.5	10.4	3.3	9.0	10.9	12.6	11.4	6.5	31.3
SA	3.9	12.2	3.9	8.9	11.8	15.9	10.4	6.6	26.4
Tas	7.9	12.3	3.1	7.9	10.1	14.8	8.5	6.5	28.8
ACT	25.2	10.1	5.8	6.0	1.9	8.4	15.3	8.4	19.1
NT (b)	np	np	np	np	np	np	np	np	np
Australia	5.3	10.4	3.4	8.7	10.8	14.1	12.3	6.2	28.8
<i>Sex</i>									
Males	4.8	3.9	3.0	13.5	13.9	13.0	12.1	3.5	32.2
Females	5.8	18.5	3.9	2.9	6.9	15.4	12.4	9.7	24.5
Persons	5.3	10.4	3.4	8.7	10.8	14.1	12.3	6.2	28.8
<i>Remoteness</i>									
Major cities	5.3	10.7	3.2	8.0	11.5	13.6	14.4	6.5	26.8
Inner regional	5.3	10.0	4.1	11.1	10.4	16.2	8.3	5.7	29.0
Outer regional	4.6	10.3	4.1	8.7	7.8	14.4	5.9	5.5	38.6
Total non-remote	5.3	10.5	3.4	8.7	10.8	14.1	12.4	6.2	28.5
Remote	5.6	4.9	3.3	6.4	5.2	11.6	3.5	5.8	53.7
Very remote (c)	na	na	na	na	na	na	na	na	na
Total remote
Australia	5.3	10.4	3.4	8.7	10.8	14.1	12.3	6.2	28.8

OVERCOMING INDIGENOUS
DISADVANTAGE: KEY
INDICATORS 2007

ATTACHMENT
TABLES

Table 11A.1.9

Table 11A.1.9 Employment by industry, non-Indigenous people aged 18–64 years, age standardised, 2004-05 (a)

Age	Government administration and defence	Health and community services	Personal and other services	Construction	Manufacturing	Retail trade	Property and business services	Education	Other industries (d)
18-24	2.6	6.3	2.9	8.1	9.6	28.7	10.5	3.1	28.1
25-34	5.0	9.1	4.4	9.1	10.9	12.6	13.1	4.9	31.0
35-44	6.1	10.1	3.9	9.4	11.7	11.8	12.8	6.9	27.3
45-54	6.2	13.6	3.0	8.0	10.2	11.3	12.0	8.4	27.4
55-64	5.6	12.5	2.3	8.5	10.9	9.6	12.7	7.3	30.5
Total Non AS 18-64	5.3	10.4	3.5	8.7	10.7	14.2	12.3	6.2	28.7
Total AS 18-64	5.3	10.4	3.4	8.7	10.8	14.1	12.3	6.2	28.8
RSE (%)									
State/territory									
NSW	8.9	7.8	11.9	8.3	7.3	6.2	6.2	9.8	2.9
Vic	13.2	6.1	13.3	9.1	7.4	6.7	6.7	8.9	4.5
Qld	12.2	8.4	14.6	8.1	8.1	7.1	7.0	8.8	3.8
WA	13.4	8.8	20.3	11.3	9.2	8.6	8.7	9.8	4.9
SA	11.2	6.4	12.6	8.9	8.1	5.9	7.3	8.4	4.6
Tas	12.1	8.9	18.2	11.0	8.0	11.6	11.1	15.7	6.6
ACT	6.5	10.2	15.4	18.1	22.7	12.0	9.2	13.0	7.7
NT (b)	np	np	np	np	np	np	np	np	np
Australia	4.5	3.1	6.3	4.3	4.1	3.1	2.9	4.2	1.6
Sex									
Males	7.0	8.3	9.7	4.5	4.9	5.2	4.4	7.4	2.4
Females	7.0	3.0	8.9	11.0	6.7	4.2	4.7	4.8	2.3
Persons	4.5	3.1	6.3	4.3	4.1	3.1	2.9	4.2	1.6

OVERCOMING INDIGENOUS
DISADVANTAGE: KEY
INDICATORS 2007

ATTACHMENT
TABLES

Table 11A.1.9

Table 11A.1.9 Employment by industry, non-Indigenous people aged 18–64 years, age standardised, 2004-05 (a)

Remoteness	Government administration and defence	Health and community services	Personal and other services	Construction	Manufacturing	Retail trade	Property and business services	Education	Other industries (d)
Major cities	5.4	3.9	7.2	5.7	4.7	3.3	3.2	5.1	2.0
Inner regional	11.8	8.2	12.3	8.5	8.7	6.5	8.6	8.8	4.6
Outer regional	17.1	10.6	20.8	13.1	10.8	9.8	13.7	12.4	5.9
Total non-remote	4.6	3.1	6.3	4.3	4.1	3.1	3.0	4.2	1.7
Remote	29.3	30.0	32.3	27.4	37.3	23.9	40.7	29.2	9.3
Very remote (c)	na	na	na	na	na	na	na	na	na
Total remote
Australia	4.5	3.1	6.3	4.3	4.1	3.1	2.9	4.2	1.6
Age									
18-24	19.4	10.9	15.2	13.7	10.4	5.7	8.9	20.2	5.3
25-34	9.0	6.9	10.7	8.2	7.5	6.8	6.7	9.4	3.6
35-44	7.5	5.8	11.0	6.9	5.6	5.8	5.5	7.3	3.6
45-54	8.5	5.9	12.7	8.5	8.0	8.1	6.8	7.7	3.6
55-64	14.0	7.2	17.0	9.6	9.5	10.2	7.8	9.7	4.7
Total Non AS 18-64	4.4	3.1	6.2	4.3	4.1	3.1	2.9	4.2	1.6
Total AS 18-64	4.5	3.1	6.3	4.3	4.1	3.1	2.9	4.2	1.6

RSE=Relative standard error. AS=Age standardised.

(a) Estimates with a relative standard error of between 25 per cent to 50 per cent should be used with caution. Estimates with a relative standard error greater than 50 per cent are considered too unreliable for general use.

(b) The sample size in the NT was considered too small to produce reliable estimates for the NT in the ABS 2004-05 NHS, but NT records in the survey have been attributed appropriately to national estimates.

Table 11A.1.9

Table 11A.1.9 **Employment by industry, non-Indigenous people aged 18–64 years, age standardised, 2004-05 (a)**

<i>Government administration and defence</i>	<i>Health and community services</i>	<i>Personal and other services</i>	<i>Construction</i>	<i>Manufacturing</i>	<i>Retail trade</i>	<i>Property and business services</i>	<i>Education</i>	<i>Other industries (d)</i>
--	--	--	---------------------	----------------------	---------------------	---	------------------	-------------------------------------

(c) Age standardised Indigenous data for the very remote area are not provide by the ABS as non-Indigenous data for the very remote area are not available (they were not collected in the 2004-05 NHS). The records for the very remote areas have been attributed appropriately to national estimates.

(d) Other industries include transport and storage; culture and recreational services; agriculture, forestry and fishing; accommodation, cafes and restaurants; finance and insurance; wholesale trade; communication services; mining; electricity, gas and water supply.

.. Not applicable; na Not available; np Not available for publication but included in total where applicable, unless otherwise indicated.

Source: ABS *National Health Survey 2004-05; Summary of Results*, Cat. no. 4362.0 (unpublished).

Table 11A.1.10

Table 11A.1.10 Occupation skill levels of people aged 18–64 years, 2004-05, age standardised (a) (b) (c)

	Skill level							
	1	2		3		4		5
	Proportion of total employed (%)	RSE (%)	Proportion of total employed (%)	RSE (%)	Proportion of total employed (%)	RSE (%)	Proportion of total employed (%)	RSE (%)
35-44	31.5	3.8	13.8	4.7	14.8	5.4	24.6	3.6
45-54	33.7	3.4	13.7	7.2	13.8	7.0	23.6	4.2
55-64	32.8	5.4	11.8	8.2	14.4	9.3	26.5	4.7
Total Non AS 18-64 (c)	29.3	2.3	12.7	3.1	15.5	2.6	25.6	1.8
Total AS 18-64	29.3	2.3	12.7	3.1	15.5	2.6	25.6	1.8

RSE=Relative standard error. AS=Age standardised.

(a) Estimates with a relative standard error of between 25 per cent to 50 per cent should be used with caution. Estimates with a relative standard error greater than 50 per cent are considered too unreliable for general use.

(b) The Australian Standard Classification of Occupations (ASCO) Second Edition (ABS Cat. no. 1220.0), which is used for the classification of occupations, applies skill level and skill specialisation as major criteria. A collection of jobs which are sufficiently similar in their main tasks is grouped together for the purposes of classification. Skill level is measured by: formal education and training, and previous experience usually required for entry into an occupation. The ASCO assigns nine major occupation groups to five skill levels: Skill level 1 — managers and administrators and professionals; Skill level 2 — associate professionals; Skill level 3 — tradespersons and related workers and advanced clerical and service workers; Skill level 4 — intermediate production and transport workers and intermediate clerical, sales and service workers; Skill level 5 — elementary clerical, sales and service workers and labourers and related workers.

(c) Includes inadequately described occupation/skill level.

(d) Non-Indigenous data for the very remote area were not collected in the 2004-05 NHS.

.. Not applicable; **na** Not available.

Source: ABS *National Health Survey 2004-05; Summary of Results*, Cat. no. 4362.0 (unpublished).

Table 11A.2.1

Table 11A.2.1 **Self employment of people aged 18–64 years in non-remote areas, age standardised (a) (b)**

	<i>Indigenous</i>		<i>Non-Indigenous</i>	
	<i>Proportion of total employed (%)</i>	<i>RSE (%)</i>	<i>Proportion of total employed (%)</i>	<i>RSE (%)</i>
2001				
<i>Sex</i>				
Males	10.5	35.7	25.1	2.8
Females	7.3	43.0	15.8	4.0
Total	8.9	24.4	21.0	2.0
<i>Remoteness areas</i>				
Major cities	7.7	58.5	18.4	3.2
Inner regional	9.2	61.0	25.4	4.0
Outer regional	9.3	38.7	29.4	4.8
Total non-remote	8.9	24.4	21.0	2.0
<i>Age</i>				
18-24	np	np	na	na
25-34	5.5	53.3	16.2	4.8
35-44	19.5	29.5	23.4	4.7
45-54	5.1	46.0	27.9	4.1
55-64	8.5	84.0	31.4	5.1
Total Non AS 18-64	8.6	21.9	20.5	2.0
Total AS 18-64	8.9	24.4	21.0	2.0
2004-05				
<i>State/territory</i>				
NSW	6.4	29.3	12.6	0.8
Vic	14.5	44.8	11.2	1.1
Qld	6.1	44.0	15.2	1.5
WA	6.2	47.7	14.5	0.9
SA	8.0	43.5	14.2	1.3
Tas	10.6	26.1	10.7	1.2
ACT	7.6	45.7	8.2	1.2
NT	np	np	na	na
Australia	7.5	17.7	13.0	2.9
<i>Sex</i>				
Males	10.1	19.5	14.9	3.8
Females	4.4	30.9	10.6	5.5
Total	7.5	17.7	13.0	2.9

Table 11A.2.1

Table 11A.2.1 Self employment of people aged 18–64 years in non-remote areas, age standardised (a) (b)

	<i>Indigenous</i>		<i>Non-Indigenous</i>	
	<i>Proportion of total employed (%)</i>	<i>RSE (%)</i>	<i>Proportion of total employed (%)</i>	<i>RSE (%)</i>
<i>Remoteness areas</i>				
Major cities	8.7	28.4	10.9	4.0
Inner regional	9.5	36.9	16.9	6.0
Outer regional	3.4	29.2	19.0	8.3
Total non-remote	7.5	17.7	13.0	2.9
<i>Age</i>				
18-24	2.5	43.5	3.9	16.6
25-34	4.9	29.8	9.4	7.4
35-44	9.3	23.4	14.0	4.8
45-54	11.9	25.7	15.8	5.2
55-64	7.4	46.5	22.0	5.2
Total Non AS 18-64	6.7	15.3	12.7	2.9
Total AS 18-64	7.5	17.7	13.0	2.9

RSE=Relative standard error. AS=Age standardised.

(a) Estimates with a relative standard error of between 25 per cent to 50 per cent should be used with caution. Estimates with a relative standard error greater than 50 per cent are considered too unreliable for general use.

(b) Includes employers and own account workers.

na Not available; **np** Not available for publication but included in total where applicable, unless otherwise indicated.

Source: ABS *National Health Survey: Aboriginal and Torres Strait Islander Results 2001*, Cat. no. 4715.0 (unpublished); ABS *National Health Survey 2001*, Cat. no. 4364.0 (unpublished); ABS *National Aboriginal and Torres Strait Islander Health Survey 2004-05*, Cat. no. 4715.0.55.005 (unpublished); ABS *National Health Survey 2004-05; Summary of Results*, Cat. no. 4362.0 (unpublished).

Table 11A.3.1

Table 11A.3.1 Indigenous owned or controlled land by State/Territory, December 2006 (a)

Unit	NSW	Vic	Qld	WA	SA	Tas	ACT	NT	Aust
Area of land by tenure type									
Freehold (inalienable)	–	50.1	–	–	188 819.9	46.2	–	568 366.6	757 282.8
Freehold (alienable)	3 581.5	48.2	25 212.2	438.4	167.1	30.8	–	10 765.1	40 243.3
Old system	–	1.7	–	–	–	1.2	–	–	2.9
Leasehold	369.2	–	29 079.5	161 640.3	14 909.3	46.7	–	23 122.6	229 167.6
Licence	63.6	–	–	–	25.3	–	–	–	88.9
Aboriginal Reserve	–	–	–	–	–	–	–	–	202 404.2
Deed of Grant in Trust (Qld)	–	–	51.2	202 352.9	–	–	–	–	–
Tenure not stated	167.0	–	156.2	–	–	–	–	–	156.2
Total Indigenous land	4 181.2	100.0	54 758.0	364 436.7	203 923.0	169.0	–	604 842.2	1 232 410.1
Proportion of total Indigenous land	0.3	–	4.4	29.6	16.5	–	–	49.1	100.0
Total land area of State/Territory	800 642.0	227 416.0	1 730 648.0	2 529 875.0	983 482.0	68 401.0	2 358.0	1 349 129.0	7 692 024.0
Indigenous land as a proportion of total land area									
Number of land parcels (b)	5996	464	1561	2609	1490	220	2	1031	13373

(a) The ILC makes no warranties as to the currency or accuracy of this information.

(b) Parcels are individual geographic features rather than legal entities. That is, a legal parcel may be dissected into two or more parcels by, for example, a road, and are represented in these data as two parcels while being only a single legal land entity.

– Nil or rounded to zero.

Source: ILC (unpublished).

Table 11A.3.2

Table 11A.3.2 Indigenous owned or controlled land by remoteness area, December 2006 (a)

	Unit	Major cities	Inner regional	Outer regional	Remote	Very remote	Aust
Area of land by tenure type							
Freehold (inalienable)	km ²	0.1	16.3	201.9	5 082.9	751 981.5	757 282.8
Freehold (alienable)	km ²	31.2	158.3	1 837.4	4 004.4	34 212.1	40 243.3
Old system	km ²	–	1.7	–	1.2	–	2.9
Leasehold	km ²	0.2	3.8	296.2	5 476.1	223 391.5	229 167.7
Licence	km ²	–	–	88.9	–	–	88.9
Aboriginal Reserve	km ²	0.6	0.3	108.2	155.2	202 139.9	202 404.2
Deed of Grant in Trust (Qld)	km ²	–	–	–	–	156.2	156.2
Tenure not stated	km ²	–	–	64.9	116.2	2 883.2	3 064.3
Total Indigenous land	km ²	32.1	180.4	2 597.4	14 835.9	1 214 764.3	1 232 410.2
Proportion of total Indigenous land	%	–	–	0.2	1.2	98.6	100.0
Total land area of region	km²	14 330.0	219 380.0	801 524.0	1 019 581.0	5 637 209.0	7 692 024.0
Indigenous land as a proportion of total land area	%	0.2	0.1	0.3	1.5	21.5	16.0
Number of Indigenous land parcels	no.	1 495	2 461	3 937	1 669	3 811	13 373

(a) The ILC makes no warranties as to the currency and accuracy this information.

(b) Parcels are individual geographic features rather than legal entities. That is, a legal parcel may be dissected into two or more parcels by, for example, a road and are represented in these data as two parcels while being only a single legal land entity.

– Nil or rounded to zero.

Source: ILC (unpublished).

Table 11A.3.3

Table 11A.3.3 **Determinations of native title by State/Territory/Commonwealth (a)**

	<i>Unit</i>	<i>NSW</i>	<i>Vic</i>	<i>Qld</i>	<i>WA</i>	<i>SA</i>	<i>Tas</i>	<i>ACT</i>	<i>NT (b)</i>	<i>Cwlth (c)</i>	<i>Aust</i>
As at 30 June 2006											
Native title exists in full or in part	km ²	0.1	398.1	28 271.0	582 904.6	1 865.1	–	–	12 529.9	2 325.5	628 294.3
Native title extinguished	km ²	874.2	10 519.5	248.2	23 208.0	–	–	–	310.8	2 134.0	37 294.7
Total area of determinations	km ²	874.3	10 917.6	28 519.2	606 112.6	1 865.1	–	–	12 840.7	4 459.5	665 589.0
Area of State/Territory land where native title found to exist as a proportion of all land where native title found to exist	%	–	3.6	99.1	96.2	100.0	–	–	97.6	–	94.4
Total area of State/Territory (d)	km ²	800 642.0	227 416.0	1 730 648.0	2 529 875.0	983 482.0	68 401.0	2 358.0	1 349 129.0	na	7 692 024.0
Proportion of State/Territory land where native title determined to exist in full or part	%	–	0.2	1.6	23.0	0.2	–	–	0.9	–	8.2
Proportion of State/Territory land where native title determined not to exist	%	0.1	4.6	–	0.9	–	–	–	–	–	0.5
Proportion of land subject to determinations	%	0.1	4.8	1.6	24.0	0.2	–	–	1.0	–	8.7
As at 30 June 2005											
Native title exists in full or in part	km ²	0.1	–	27 800.6	576 630.2	1 865.1	–	–	11 040.9	2 325.5	619 662.4
Native title extinguished	km ²	869.1	1 144.3	248.2	20 782.7	–	–	–	47.8	2 129.4	25 221.5
Total area of determinations	km ²	869.2	1 144.3	28 048.8	597 412.9	1 865.1	–	–	11 088.7	4 454.9	644 883.9
Area of State/Territory land where native title found to exist as a proportion of all land where native title found to exist	%	–	–	99.1	96.5	100.0	–	–	99.6	–	96.1
Total area of State/Territory (d)	km ²	800 642.0	227 416.0	1 730 648.0	2 529 875.0	983 482.0	68 401.0	2 358.0	1 349 129.0	na	7 692 024.0
Proportion of State/Territory land where native title determined to exist in full or part	%	–	–	1.6	22.8	0.2	–	–	0.8	–	8.1

Table 11A.3.3

Table 11A.3.3 Determinations of native title by State/Territory/Commonwealth (a)

	Unit	NSW	Vic	Qld	WA	SA	Tas	ACT	NT (b)	Cwlth (c)	Aust
Proportion of State/Territory land where native title determined not to exist	%	0.1	0.5	–	0.8	–	–	–	–	–	0.3
Proportion of land subject to determinations	%	0.1	0.5	1.6	23.6	0.2	–	–	0.8	–	8.4
As at 30 June 2004											
Native title exists in full or in part	km ²	–	–	15 523.3	334 902.8	–	–	–	11 095.4	2 562.7	364 084.2
Native title extinguished	km ²	868.8	1 144.3	248.2	3 753.6	1 865.1	–	–	15.7	–	7 895.7
Total area of determinations	km ²	868.9	1 144.3	15 771.5	338 656.4	1 865.1	–	–	11 111.1	2 562.7	371 980.0
Area of State/Territory land where native title found to exist as a proportion of all land where native title found to exist	%	–	–	98.4	98.9	–	–	–	99.9	100.0	97.9
Total area of State/Territory (d)	km ²	800 642.0	227 416.0	1 730 648.0	2 529 875.0	983 482.0	68 401.0	2 358.0	1 349 129.0	na	7 692 024.0
Proportion of State/Territory land where native title determined to exist in full or part	%	–	–	0.9	13.2	–	–	–	0.8	na	4.7
Proportion of State/Territory land where native title determined not to exist	%	0.1	0.5	–	0.1	0.2	–	–	–	na	0.1
Proportion of land subject to determinations	%	0.1	0.5	0.9	13.4	0.2	–	–	0.8	na	4.8

(a) Areas are based on the geographic extent of the determination area as per the court's decision. Parts of these determinations may not be included on the National Native Title Register at this time. Where native title has been extinguished within a determination area and it has been possible to map these areas then they have been included in the calculations.

(b) Includes areas subject to appeal.

(c) Commonwealth waters where determinations of native title have been made.

(d) Areas include islands adjacent to the mainland - figures sourced from Geoscience Australia (1993).

– Nil or rounded to zero. **na** Not applicable.

Source: NNTT (unpublished).

Table 11A.3.4

Table 11A.3.4 Determinations of native title by remoteness area (a), (b)

	Unit	Major cities	Inner regional	Outer regional	Remote	Very remote (c)	Aust
As at 30 June 2006							
Native title exists in full or in part	km ²	–	0.1	524.7	1 615.2	626 154.3	628 294.3
Native title extinguished	km ²	2.5	978.2	4 290.3	6 549.8	25 473.9	37 294.7
Total area of determinations	km ²	2.5	978.3	4 815.0	8 165.0	651 628.2	665 589.0
Proportion of remoteness area where native title found to exist as a proportion of all land where native title found to exist	%	–	0.0	0.1	0.3	99.7	100.0
Total area of remoteness area (d)	km ²	14 330.0	219 380.0	801 524.0	1 019 581.0	5 637 209.0	7 692 024.0
Proportion of remoteness area land where native title determined to exist in full or part	%	–	–	–	0.2	11.1	8.2
Proportion of remoteness area land where native title determined not to exist	%	–	0.4	0.5	0.6	0.5	0.5
Proportion of land subject to determinations	%	–	0.4	0.6	0.8	11.6	8.7
As at 30 June 2005							
Native title exists in full or in part	km ²	–	0.1	143.5	685.9	618 832.9	619 662.4
Native title extinguished	km ²	–	938.3	1 074.5	42.8	23 163.5	25 219.1
Total area of determinations	km ²	–	938.4	1 218.0	728.7	641 996.4	644 881.5
Proportion of remoteness area land where native title determined to exist in full or part	%	–	–	–	0.1	99.9	100.0
Total area of remoteness area (d)	km ²	14 330.0	219 380.0	801 524.0	1 019 581.0	5 637 209.0	7 692 024.0
Proportion of remoteness area land where native title determined to exist in full or part	%	–	–	–	0.1	11.0	8.1
Proportion of remoteness area land where native title determined not to exist	%	–	0.4	0.1	0.0	0.4	0.3
Proportion of land subject to determinations	%	–	0.4	0.2	0.1	11.4	8.4

Table 11A.3.4 **Determinations of native title by remoteness area (a), (b)**

- (a) Areas are based on the geographic extent of the determination area as per the Court's decision. Parts of these determinations may not be included on the National Native Title Register at this time. Where native title has been extinguished within a determination area and it has been possible to map these areas then they have been included in the calculations.
 - (b) Remoteness regions sourced from ABS - Australian Standard Geographical Classification Digital Boundaries Australia 2001. The remoteness classification extended seaward to include determinations over State, Territory and Commonwealth waters.
 - (c) Includes areas subject to appeal.
 - (d) Remoteness area figures proportioned to total land area sourced from Geoscience Australia (1993).
 - Nil or rounded to zero.
- Source: NNTT (unpublished).

Table 11A.3.5

Table 11A.3.5 Registered Indigenous land use agreements by State/Territory (a)

	Unit	NSW	Vic	Qld	WA	SA	Tas	ACT	NT	Aust
As at 30 June 2006										
Number of ILUAs intersecting jurisdiction	no.	5	22	131	5	9	—	—	78	250
Total area of Registered ILUAs	km ²	8 633.1	67 043.0	349 677.1	390 625.4	191 018.5	—	—	106 800.6	1 113 797.7
Total area of State/Territory covered by Registered ILUAs	km ²	8 633.1	67 041.5	257 740.0	222 870.0	149 938.3	—	—	106 643.4	812 866.3
Total area of State/Territory (b)	km ²	800 642.0	227 416.0	1 730 648.0	2 529 875.0	983 482.0	68 401.0	2 358.0	1 349 129.0	7 692 024.0
Proportion of land subject to ILUAs	%	1.1	29.5	14.9	8.8	15.2	—	—	7.9	10.6
As at 30 June 2005										
Number of ILUAs intersecting jurisdiction	no.	4	14	112	3	5	—	—	44	182
Total area of Registered ILUAs	km ²	8 632.8	12.4	307 840.7	55 113.5	152 254.3	—	—	70 239.0	594 092.7
Total area of State/Territory covered by Registered ILUAs	km ²	8 632.8	12.4	244 956.1	55 113.5	111 175.0	—	—	70 145.4	490 035.2
Total area of State/Territory (b)	km ²	800 642.0	227 416.0	1 730 648.0	2 529 875.0	983 482.0	68 401.0	2 358.0	1 349 129.0	7 692 024.0
Proportion of land subject to ILUAs	%	1.1	—	14.2	2.2	11.3	—	—	5.2	7.7
As at 30 June 2004										
Number of ILUAs intersecting jurisdiction	no.	4	11	78	2	2	—	—	33	130
Total area of Registered ILUAs	km ²	8 634.0	12.0	192 617.0	54 316.0	41 080.0	—	—	69 493.0	366 152.0
Total area of State/Territory (b)	km ²	800 642.0	227 416.0	1 730 648.0	2 529 875.0	983 482.0	68 401.0	2 358.0	1 349 129.0	7 692 024.0
Proportion of land subject to ILUAs	%	1.1	—	11.1	2.1	4.2	—	—	5.2	4.8
As at 30 June 2003										
Number of ILUAs intersecting jurisdiction	no.	4	10	48	1	1	—	—	20	84
Total area of Registered ILUAs	km ²		10.4	134 959.6	47 542.0	—	—	—	48 073.0	239 219.0
Total area of State/Territory (b)	km ²	800 642.0	227 416.0	1 730 648.0	2 529 875.0	983 482.0	68 401.0	2 358.0	1 349 129.0	7 692 024.0
Proportion of land subject to ILUAs	%	1.1	—	7.8	1.9	—	—	—	3.6	3.1

Table 11A.3.5 **Registered Indigenous land use agreements by State/Territory (a)**

- (a) Areas are normally based on the geographic extent of the ILUA area, however, where specific exclusions are indicated, these are normally mapped and not included in the area calculation. As more than one ILUA can cover the same area (this is specifically relevant where body corporate agreements are developed) the total area of land covered has also been calculated.
- (b) Areas include islands adjacent to the mainland - figures sourced from Geoscience Australia (1993).
- Nil or rounded to zero.
- Source: NNTT (unpublished).

Table 11A.3.6 Registered Indigenous land use agreements by remoteness area

	Unit	Major cities	Inner regional	Outer regional	Remote	Very remote	Aust
As at 30 June 2006							
Total area of registered ILUAs	km ²	72.3	13 880.3	58 495.3	65 646.1	975 703.7	1 113 797.7
Total area covered by registered ILUAs	km ²	72.3	13 879.3	57 825.2	57 776.8	683 312.7	812 866.3
Total area of remoteness area (c)	km ²	14 330.0	219 380.0	801 524.0	1 019 581.0	5 637 209.0	7 692 024.0
Proportion of land subject to ILUAs	%	0.5	6.3	7.2	5.7	12.1	10.6
As at 30 June 2005							
Total area of registered ILUAs	km ²	72.3	3 835.1	6 868.7	24 809.2	558 507.4	594 092.7
Total area covered by registered ILUAs	km ²	72.3	3 835.1	6 241.5	18 240.1	461 646.2	490 035.2
Total area of remoteness area (c)	km ²	14 330.0	219 380.0	801 524.0	1 019 581.0	5 637 209.0	7 692 024.0
Proportion of land subject to ILUAs	%	0.5	1.7	0.8	1.8	8.2	6.4

(a) Areas are normally based on the geographic extent of the ILUA area, however, where specific exclusions are indicated, these are normally mapped and not included in the area calculation. As more than one ILUA can cover the same area (this is specifically relevant where body corporate agreements are developed) the total area of land covered has also been calculated.

(b) Remoteness areas sourced from ABS - Australian Standard Geographical Classification Digital Boundaries Australia 2001. The remoteness classification extended seaward to include State, Territory and Commonwealth waters.

(c) Remoteness area figures proportioned to total land area sourced from Geoscience Australia (1993)

Source: NNTT (unpublished).

Table 11A.3.7 Determinations of native title, at 30 June 2006

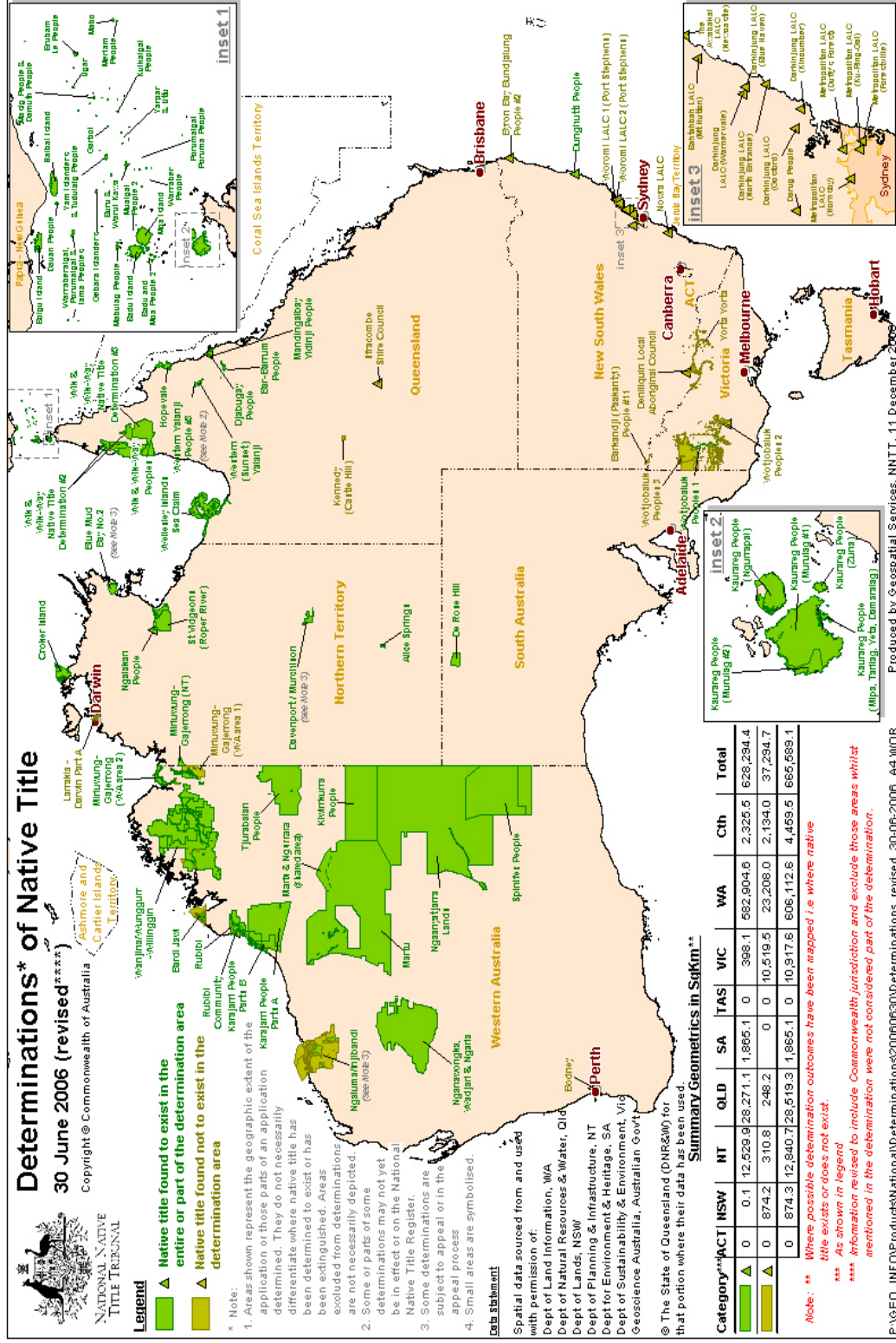


Table 11A.3.8 Determinations of native title as at 30 June 2006 mapped against ABS remoteness areas

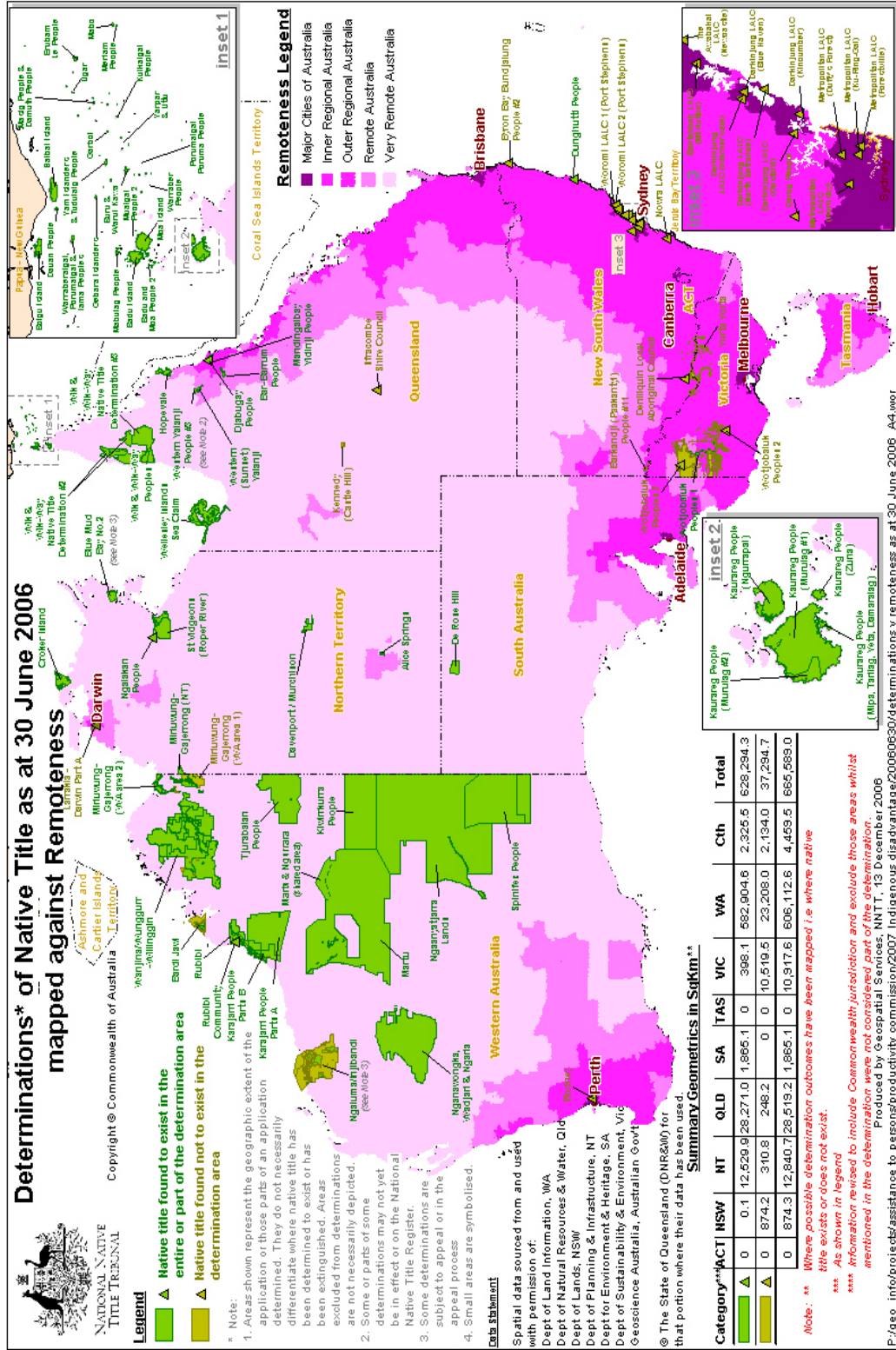


Table 11A.3.9 Registered Indigenous land use agreements, at 30 June 2006

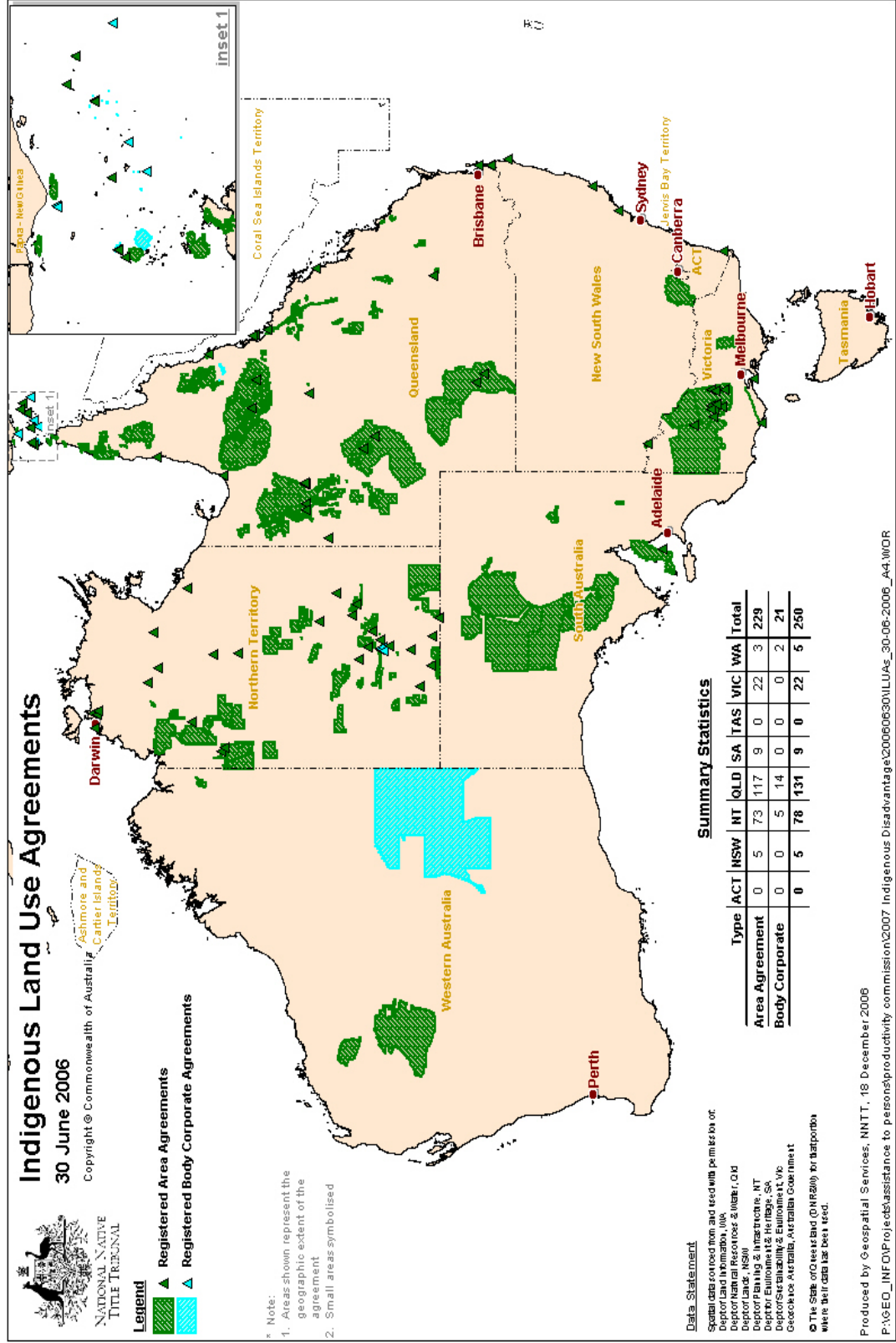


Table 11A.3.10 Registered Indigenous land use agreements at 30 June 2006 mapped against ABS remoteness areas

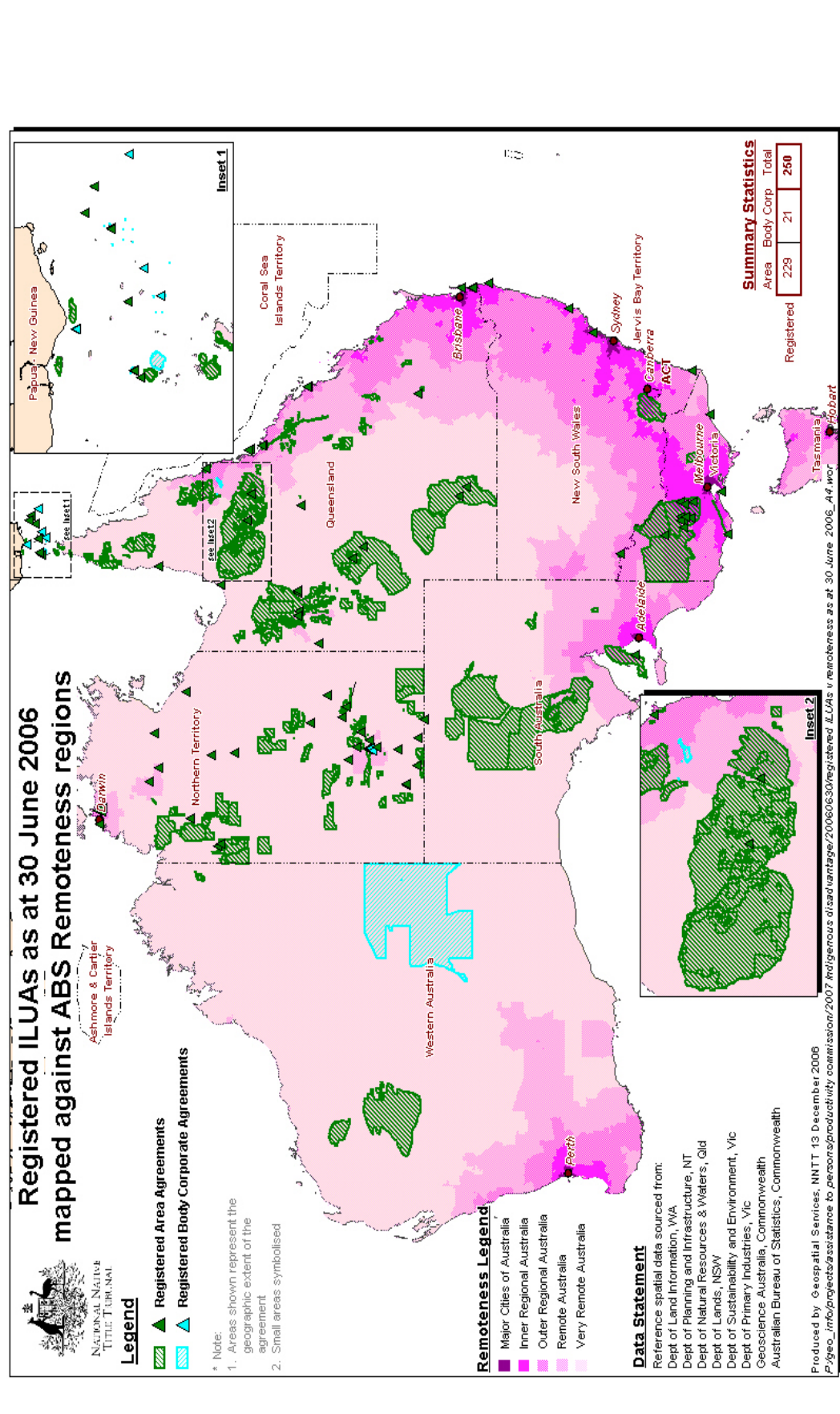


Table 11A.3.11 Land purchased by the Indigenous Land Corporation, as at 29 March 2007

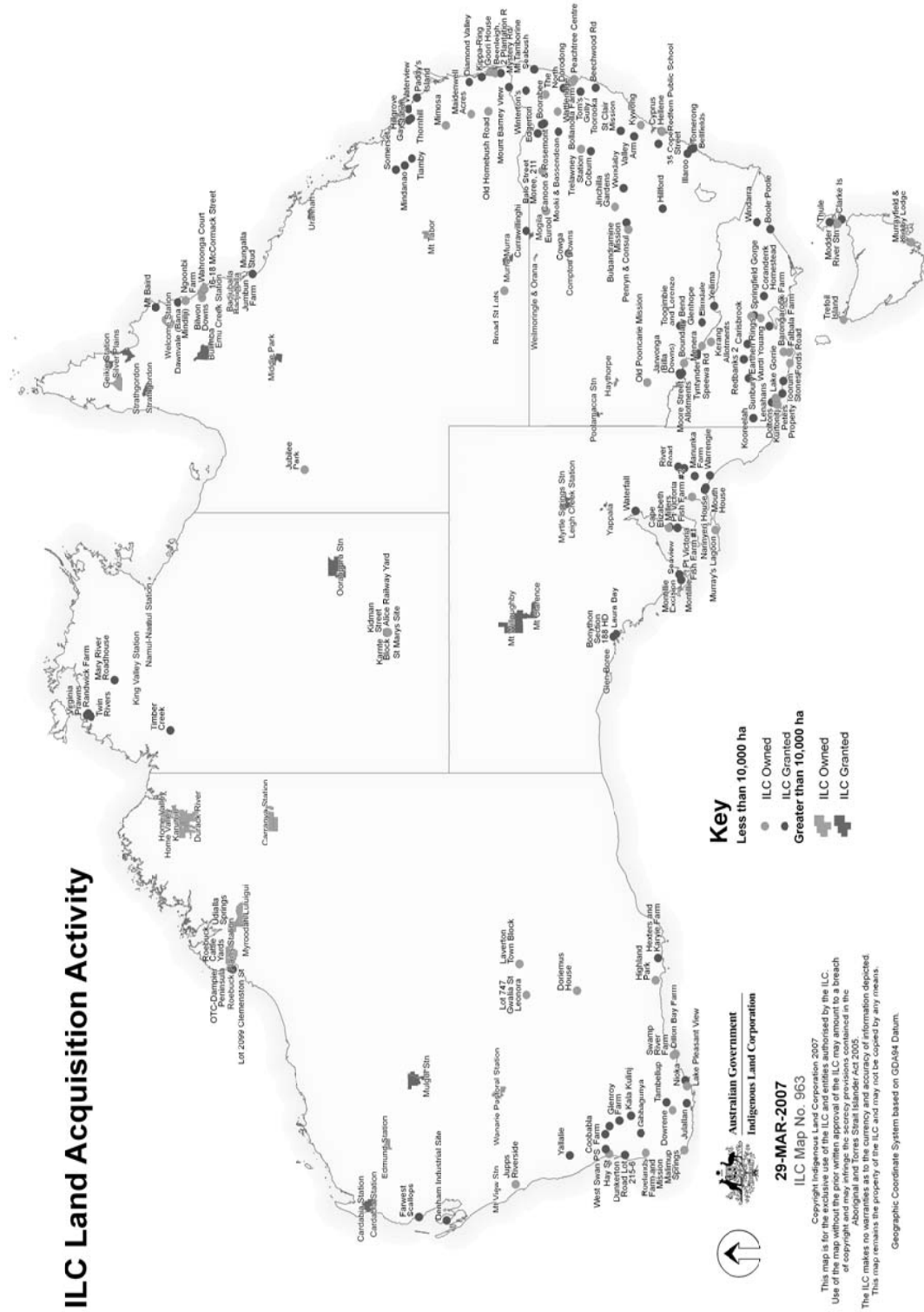


Table 11A.4.1

Table 11A.4.1 Number of students studying management, commerce, business law, economics and econometrics, by State and Territory (a)

2002	University	Indigenous			Non-Indigenous			Unknown			Total		
		Males		Total	Males		Total	Males		Total	Males		Total
		Females			Females			Females			Females		
	NSW	131	115	246	27 646	25 740	53 386	1 237	1 153	2 390	29 014	27 008	na
	Victoria	43	36	79	23 094	20 267	43 361	1 028	865	1 893	24 165	21 168	na
	Queensland	103	147	250	13 079	14 482	27 561	2 196	2 349	4 545	15 378	16 978	na
	WA	34	39	73	7 603	6 668	14 271	213	171	384	7 850	6 878	na
	SA	15	31	46	4 515	4 102	8 617	–	–	–	4 530	4 133	na
	Tasmania	15	13	28	1 211	920	2 131	6	3	9	1 232	936	na
	ACT	20	26	46	361	529	890	3	12	15	384	567	na
	NT	17	16	33	2 789	2 525	5 314	–	–	–	2 806	2 541	na
	Multi-State	–	8	8	516	509	1 025	–	1	1	516	518	na
	Total	378	431	809	80 814	75 742	156 556	4 683	4 554	9 237	85 875	80 727	na
	Technical or Further Educational Institution (including TAFE Colleges) (b)												
	NSW	2 019	3 568	5 593	71 871	112 233	184 306	16 356	20 050	37 281	90 246	135 851	1 083
	Victoria	888	876	1 765	83 174	93 344	176 601	20 071	22 847	43 380	104 133	117 067	546
	Queensland	3 184	3 750	6 934	49 311	58 197	107 518	5 714	4 596	10 335	58 209	66 543	35
	WA	947	1 106	2 053	23 447	27 921	51 399	4 477	4 410	8 960	28 871	33 437	104
	SA	1 579	1 690	3 278	18 835	22 183	41 150	10 515	8 894	19 463	30 929	32 767	195
	Tasmania	244	331	575	7 318	8 871	16 196	389	492	898	7 951	9 694	24
	ACT	1 349	1 769	3 122	2 497	2 895	5 395	96	192	339	3 942	4 856	58
	NT	48	72	120	4 446	5 521	9 968	128	135	270	4 622	5 728	8
	Total	10 258	13 162	23 440	260 899	331 165	592 533	57 746	61 616	120 926	328 903	405 943	2 053

OVERCOMING INDIGENOUS
DISADVANTAGE: KEY
INDICATORS 2007

ATTACHMENT
TABLES

Table 11A.4.1

Table 11A.4.1 Number of students studying management, commerce, business law, economics and econometrics, by State and Territory (a)

2003	University	Indigenous			Non-Indigenous			Unknown			Total		
		Males		Total	Males		Total	Males		Total	Males		Total
		Females			Females			Females			Females		
	NSW	126	135	261	28 931	26 419	55 350	1 284	1 129	2 413	30 341	27 683	na
	Victoria	40	38	78	23 130	20 093	43 223	1 365	1 070	2 435	24 535	21 201	na
	Queensland	112	149	261	15 176	16 877	32 053	93	81	174	15 381	17 107	na
	WA	29	52	81	7 891	6 837	14 728	217	175	392	8 137	7 064	na
	SA	21	30	51	4 817	4 245	9 062	1	1	2	4 839	4 276	na
	Tasmania	9	13	22	1 256	966	2 222	4	2	6	1 269	981	na
	ACT	10	31	41	300	478	778	4	4	8	314	513	na
	NT	21	17	38	2 909	2 664	5 573	–	–	–	2 930	2 681	na
	Multi-State	2	8	10	547	524	1 071	–	1	1	549	533	na
	Total	370	473	843	84 957	79 103	164 060	2 968	2 463	5 431	88 295	82 039	na
	Technical or Further Educational Institution (including TAFE Colleges) (b)												
	NSW	1 725	3 230	4 959	65 518	107 652	173 323	19 792	24 788	45 690	87 035	135 670	1 267
	Victoria	875	941	1 817	90 203	104 054	194 825	15 098	15 806	31 103	106 176	120 801	768
	Queensland	2 904	3 437	6 341	43 731	55 658	99 436	3 678	3 649	7 349	50 313	62 744	69
	WA	822	1 015	1 837	20 500	25 202	45 714	2 871	3 336	6 211	24 193	29 553	16
	SA	1 914	2 006	3 935	21 162	23 919	45 202	6 963	6 883	13 916	30 039	32 808	206
	Tasmania	207	324	533	7 846	9 763	17 642	334	435	820	8 387	10 522	86
	ACT	1 559	1 822	3 381	2 278	2 705	4 984	117	106	243	3 954	4 633	21
	NT	58	89	147	4 443	6 600	11 045	182	236	423	4 683	6 925	7
	Total	10 064	12 864	22 950	255 681	335 553	592 171	49 035	55 239	105 755	314 780	403 656	2 440

OVERCOMING INDIGENOUS
DISADVANTAGE: KEY
INDICATORS 2007

ATTACHMENT
TABLES

Table 11A.4.1

Table 11A.4.1 Number of students studying management, commerce, business law, economics and econometrics, by State and Territory (a)

2004	University	Indigenous			Non-Indigenous			Unknown			Total		
		Males		Total	Males		Total	Males		Total	Males		Total
		Females			Females			Females			Females		
	NSW	127	161	288	26 528	24 432	50 960	1 165	1 100	2 265	27 820	25 693	na
	Victoria	48	34	82	23 163	19 906	43 069	458	381	839	23 669	20 321	na
	Queensland	100	161	261	14 270	16 046	30 316	385	314	699	14 755	16 521	na
	WA	31	31	62	7 797	6 850	14 647	266	196	462	8 094	7 077	na
	SA	18	33	51	4 493	4 122	8 615	1	2	3	4 512	4 157	na
	Tasmania	7	12	19	1 103	945	2 048	2	2	4	1 112	959	na
	ACT	21	17	38	2 410	2 354	4 764	1	–	1	2 432	2 371	na
	NT	12	20	32	267	427	694	2	2	4	281	449	na
	Multi-State	1	5	6	556	507	1 063	13	9	22	570	521	na
	Total	365	474	839	80 587	75 589	156 176	2 293	2 006	4 299	83 245	78 069	na
	Technical or Further Educational Institution (including TAFE Colleges) (b)												
	NSW	1 851	3 355	5 208	55 725	89 878	145 704	16 859	21 598	39 170	74 435	114 831	816
	Victoria	802	893	1 697	83 770	95 769	179 909	15 165	17 476	32 864	99 737	114 138	595
	Queensland	2 472	3 223	5 701	41 385	51 050	92 538	3 427	3 186	6 757	47 284	57 459	253
	WA	779	902	1 681	19 055	23 315	42 382	3 106	3 638	6 751	22 940	27 855	19
	SA	2 059	2 109	4 170	20 935	23 078	44 023	5 929	5 370	11 304	28 923	30 557	17
	Tasmania	252	308	564	8 006	9 551	17 638	228	294	550	8 486	10 153	113
	ACT	1 177	1 406	2 583	2 527	2 843	5 374	51	40	92	3 755	4 289	5
	NT	132	207	340	4 262	5 810	10 079	344	371	725	4 738	6 388	18
	Total	9 524	12 403	21 944	235 665	301 294	537 647	45 109	51 973	98 213	290 298	365 670	1 836

OVERCOMING INDIGENOUS
DISADVANTAGE: KEY
INDICATORS 2007

ATTACHMENT
TABLES

Table 11A.4.1

Table 11A.4.1 Number of students studying management, commerce, business law, economics and econometrics, by State and Territory (a)

2005	University	Indigenous			Non-Indigenous			Unknown			Total		
		Males		Total	Males		Total	Males		Total	Males		Total
		Females			Females			Females			Females		
	NSW	110	156	266	25 150	22 991	48 141	2 526	2 361	4 887	27 786	25 508	na
	Victoria	43	34	77	22 194	19 311	41 505	583	649	1 232	22 820	19 994	na
	Queensland	76	147	223	14 094	15 679	29 773	174	95	269	14 344	15 921	na
	WA	32	29	61	7 856	7 099	14 955	298	214	512	8 186	7 342	na
	SA	14	31	45	4 620	4 049	8 669	39	30	69	4 673	4 110	na
	Tasmania	11	16	27	999	935	1 934	–	2	2	1 010	953	na
	ACT	17	10	27	2 435	2 223	4 658	–	–	–	2 452	2 233	na
	NT	6	16	22	281	377	658	–	–	–	287	393	na
	Multi-State	2	3	5	558	510	1 068	4	6	10	564	519	na
	Total	311	442	753	78 187	73 174	151 361	3 624	3 357	6 981	82 122	76 973	na
	Technical or Further Educational Institution (including TAFE Colleges) (b)												
	NSW	2 277	3 984	6 263	60 825	97 271	158 262	16 089	23 136	39 887	79 191	124 391	830
	Victoria	809	912	1 721	81 431	90 910	172 401	8 219	9 523	17 754	90 459	101 345	72
	Queensland	2 526	3 332	5 859	43 492	51 102	94 615	5 205	6 150	11 395	51 223	60 584	62
	WA	656	938	1 595	17 910	23 969	41 938	3 062	4 042	7 131	21 628	28 949	87
	SA	2 045	2 105	4 150	22 254	23 634	45 889	6 141	5 191	11 333	30 440	30 930	2
	Tasmania	235	290	526	7 747	9 294	17 060	136	204	354	8 118	9 788	34
	ACT	1 529	1 632	3 163	2 090	2 587	4 677	43	43	86	3 662	4 262	2
	NT	106	175	282	4 239	5 828	10 085	315	537	867	4 660	6 540	34
	Total	10 183	13 368	23 559	239 988	304 595	544 927	39 210	48 826	88 807	289 381	366 789	1 123
													657 293

OVERCOMING INDIGENOUS
DISADVANTAGE: KEY
INDICATORS 2007

ATTACHMENT
TABLES

Table 11A.4.1 Number of students studying management, commerce, business law, economics and econometrics, by State and Territory (a)

Indigenous			Non-Indigenous			Unknown			Total		
Males	Females	Total	Males	Females	Total	Males	Females	Total	Males	Females	Total

(a) Management, commerce, business law, economics and econometrics defined as field of education codes, 08, 090901, and 0919, from the ABS Australian Standard Classification of Education (ASCED).

(b) Totals include students whose genders are not known.

– Nil or rounded to zero (including null cells). **na** Not available.

Source: DEST; NCVET (unpublished).

Table 11A.4.2

Table 11A.4.2 Number of students studying management, commerce, business law, economics and econometrics, by remoteness

	Indigenous			Non-Indigenous			Unknown			Total			
	Males	Females	Total	Males	Females	Total	Males	Females	Total	Males	Females	Unknown	Total
2002													
University													
Major cities	203	213	416	67 252	61 471	128 723	3 013	2 510	5 523	70 468	64 194	na	134 662
Inner regional	83	99	182	9 043	9 138	1 810	1 323	1 643	2 965	10 449	10 880	na	4 957
Outer regional	69	73	142	3 843	4 427	8 270	296	333	629	4 208	4 833	na	9 041
Remote	12	26	37	494	518	1 012	35	50	85	541	594	na	1 134
Very remote	11	20	31	181	188	369	16	18	34	208	226	na	434
Technical or Further Educational Institution (including TAFE Colleges) (b)													
Major cities	2 901	3 442	6 346	148 602	189 783	338 624	34 888	39 985	75 451	186 391	233 210	820	420 421
Inner regional	1 780	2 112	3 898	56 584	73 793	130 472	10 787	11 526	22 703	69 151	87 431	491	157 073
Outer regional	2 748	3 518	6 271	34 744	45 817	80 614	5 977	5 075	11 269	43 469	54 410	275	98 154
Remote	693	1 102	1 797	7 274	8 318	15 623	2 080	1 149	3 251	10 047	10 569	55	20 671
Very remote	1 832	2 576	4 411	3 157	3 767	6 941	862	726	1 594	5 851	7 069	26	12 946
2003													
University													
Major cities	213	243	456	70 211	63 477	133 689	2 372	1 870	4 242	72 796	65 590	na	138 387
Inner regional	81	111	192	9 977	10 215	20 192	482	498	980	10 540	10 824	na	21 364
Outer regional	51	69	120	4 079	4 651	8 731	101	88	189	4 231	4 808	na	9 040
Remote	11	27	38	507	554	1 061	11	5	16	529	586	na	1 115
Very remote	14	23	37	183	205	388	3	2	5	200	230	na	430

OVERCOMING INDIGENOUS
DISADVANTAGE: KEY
INDICATORS 2007

ATTACHMENT
TABLES

Table 11A.4.2

Table 11A.4.2 Number of students studying management, commerce, business law, economics and econometrics, by remoteness

	Indigenous			Non-Indigenous			Unknown			Total			
	Males	Females	Total	Males	Females	Total	Males	Females	Total	Males	Females	Unknown	Total
Technical or Further Educational Institution (including TAFE Colleges) (b)													
Major cities	2 706	3 258	5 968	146 376	192 938	339 879	30 670	35 727	66 716	179 752	231 923	888	412 563
Inner regional	1 590	2 061	3 654	57 410	76 963	134 552	8 950	9 771	19 307	67 950	88 795	768	157 513
Outer regional	2 667	3 414	6 094	33 329	45 095	78 532	4 595	4 929	9 790	40 591	53 438	387	94 416
Remote	878	1 208	2 086	6 145	7 826	14 006	1 165	963	2 144	8 188	9 997	51	18 236
Very remote	1 924	2 527	4 453	2 710	3 435	6 176	602	622	1 228	5 236	6 584	37	11 857
2004													
University													
Major cities	297	368	665	71 431	66 049	137 480	1 845	1 579	3 424	73 573	67 996	na	141 569
Inner regional	56	82	138	8 023	8 442	16 465	353	350	703	8 432	8 874	na	17 306
Outer regional	8	17	25	404	571	975	7	5	12	419	593	na	1 012
Remote	2	2	4	164	186	350	1	5	6	167	193	na	360
Very remote	—	—	—	—	—	—	—	—	—	—	—	na	—
Technical or Further Educational Institution (including TAFE Colleges) (b)													
Major cities	2 399	3 263	5 666	134 318	172 332	307 012	28 345	33 175	61 760	165 062	208 770	606	374 438
Inner regional	1 633	1 953	3 587	52 027	68 546	120 719	8 090	9 791	18 265	61 750	80 290	531	142 571
Outer regional	2 514	3 326	5 847	31 639	40 833	72 549	4 262	5 067	9 556	38 415	49 226	311	87 952
Remote	782	1 101	1 884	5 091	6 780	11 879	756	862	1 668	6 629	8 743	59	15 431
Very remote	1 971	2 537	4 511	2 425	3 162	5 587	470	539	1 009	4 866	6 238	3	11 107

Table 11A.4.2

Table 11A.4.2 Number of students studying management, commerce, business law, economics and econometrics, by remoteness

2005	Indigenous				Non-Indigenous				Unknown				Total			
	Males		Females		Males		Females		Males		Females		Males		Females	
	Total		Total		Total		Total		Total		Total		Total		Total	
University																
Major cities	250	345	595	69 596	64 000	133 596	2 871	2 533	5 404	72 717	66 878	na	139 595			
Inner regional	52	81	133	7 415	8 055	15 470	564	611	1 175	8 031	8 747	na	16 778			
Outer regional	4	11	15	416	497	913	3	4	7	423	512	na	935			
Remote	3	4	7	148	177	325	—	4	4	151	185	na	336			
Very remote	—	—	—	—	—	—	—	—	—	—	—	na	—			
Technical or Further Educational Institution (including TAFE Colleges) (b)																
Major cities	2 398	3 334	5 733	138 371	175 555	314 130	23 236	28 145	51 594	164 005	207 034	418	371 457			
Inner regional	1 805	2 280	4 086	52 129	68 597	120 794	7 327	10 251	17 880	61 261	81 128	371	142 760			
Outer regional	2 618	3 678	6 300	31 088	40 898	72 044	4 149	5 569	9 914	37 855	50 145	258	88 258			
Remote	882	1 211	2 094	5 763	7 217	12 983	693	856	1 554	7 338	9 284	9	16 631			
Very remote	2 160	2 641	4 802	2 395	2 958	5 354	530	564	1 095	5 085	6 163	3	11 251			

(a) Management, commerce, business law, economics and econometrics defined as field of education codes, 08, 090901, and 0919, from the ABS Australian Standard Classification of Education (ASCED).

(b) Totals include students whose genders are not known. Excludes data with remoteness region as 'other'.

– Nil or rounded to zero. **na** Not available.

Source: DEST; NCVET (unpublished).

Table 11A.4.3

Table 11A.4.3 Number of students studying management, commerce, business law, economics and econometrics, by age (a)

	Indigenous			Non-Indigenous			Unknown			Total		
	Males		Total	Males		Total	Males		Total	Males		Total
	Females			Females			Females			Females		
2002												
<i>University</i>												
Less than 18	16	15	31	3 536	4 236	7 772	257	305	562	3 809	4 556	na
18-30	203	250	453	53 968	55 094	109 062	2 665	2 954	5 619	56 836	58 298	na
31-40	96	97	193	15 445	11 064	26 509	1 071	788	1 859	16 612	11 949	na
41-50	44	59	103	6 465	4 543	11 008	558	422	980	7 067	5 024	na
Over 50	19	10	29	1 400	805	2 205	132	85	217	1 551	900	na
<i>Technical or Further Educational Institution (including TAFE Colleges) (b)</i>												
18-30	4 959	5 789	10 753	129 461	142 327	271 901	21 010	22 204	43 370	155 430	170 320	274
31-40	1 937	2 672	4 614	44 148	63 821	108 023	11 198	11 752	23 023	57 283	78 245	132
41-50	1 027	1 762	2 792	32 069	56 381	88 525	9 151	10 997	20 207	42 247	69 140	137
Over 50	436	740	1 177	24 116	33 805	58 003	7 089	7 238	14 393	31 641	41 783	149
Other	1 899	2 199	4 104	31 105	34 831	66 081	9 298	9 425	19 933	42 302	46 455	1 361
2003												
<i>University</i>												
Less than 18	18	25	43	3 386	3 901	7 287	184	162	346	3 588	4 088	na
18-30	190	263	453	56 304	57 091	113 395	2 110	1 908	4 018	58 604	59 262	na
31-40	104	102	206	16 505	12 008	28 513	394	222	616	17 003	12 332	na
41-50	47	63	110	7 117	5 115	12 232	222	139	361	7 386	5 317	na
Over 50	11	20	31	1 645	988	2 633	58	32	90	1 714	1 040	na

OVERCOMING INDIGENOUS
DISADVANTAGE: KEY
INDICATORS 2007

ATTACHMENT
TABLES

Table 11A.4.3

Table 11A.4.3 Number of students studying management, commerce, business law, economics and econometrics, by age (a)

	Indigenous			Non-Indigenous			Unknown			Total		
	Males	Females	Total	Males	Females	Total	Males	Females	Total	Males	Females	Total
	<i>Technical or Further Educational Institution (including TAFE Colleges) (b)</i>											
18-30	4 564	5 484	10 052	127 192	145 030	272 497	17 248	19 122	36 455	149 004	169 636	364 319 004
31-40		2 630	4 489	41 250	62 030	103 382	9 877	10 647	20 583	52 986	75 307	161 128 454
41-50	1 116	1 733	2 853	30 587	57 341	88 054	8 277	10 435	18 765	39 980	69 509	183 109 672
Over 50	482	742	1 224	24 275	35 188	59 591	6 702	7 234	13 989	31 459	43 164	181 74 804
Other	2 043	2 275	4 332	32 377	35 964	68 647	6 931	7 801	15 963	41 351	46 040	1 551 88 942
2004												
University												
Less than 18	16	27	43	3 228	3 592	6 820	125	161	286	3 369	3 780	na 7 149
18-30	193	257	450	53 701	54 458	108 159	1 499	1 443	2 942	55 393	56 158	na 111 551
31-40	91	105	196	15 534	11 387	26 921	369	247	616	15 994	11 739	na 27 733
41-50	48	68	116	6 562	5 157	11 719	230	120	350	6 840	5 345	na 12 185
Over 50	17	17	34	1 562	995	2 557	70	35	105	1 649	1 047	na 2 696
Technical or Further Educational Institution (including TAFE Colleges) (b)												
18-30	4 305	5 085	9 399	119 374	134 350	253 955	16 086	18 178	34 325	139 765	157 613	301 297 679
31-40	1 751	2 582	4 335	36 973	53 299	90 331	9 369	10 533	19 936	48 093	66 414	95 114 602
41-50	1 079	1 693	2 774	27 124	49 890	77 098	7 383	9 522	16 947	35 586	61 105	128 96 819
Over 50	489	809	1 298	21 007	29 658	50 755	5 776	6 672	12 486	27 272	37 139	128 64 539
Other	1 900	2 234	4 138	31 187	34 097	65 508	6 495	7 068	14 519	39 582	43 399	1 184 84 165

Table 11A.4.3

Table 11A.4.3 Number of students studying management, commerce, business law, economics and econometrics, by age (a)

	Indigenous			Non-Indigenous			Unknown			Total		
	Males		Total	Males		Total	Males		Total	Males		Total
	Females			Females			Females			Females		
2005												
University												
Less than 18	8	18	26	3 435	3 655	7 090	102	128	230	3 545	3 801	na
18-30	184	241	425	53 430	52 882	106 312	2 590	2 539	5 129	56 204	55 662	na
31-40	77	106	183	13 945	10 652	24 597	539	398	937	14 561	11 156	na
41-50	31	66	97	5 944	4 997	10 941	290	241	531	6 265	5 304	na
Over 50	11	11	22	1 433	988	2 421	103	51	154	1 547	1 050	na
Technical or Further Educational Institution (including TAFE Colleges) (b)												
18-30	4 297	5 141	9 442	120 770	133 044	253 918	13 861	15 609	29 526	138 928	153 794	164
31-40	1 810	2 734	4 546	37 007	52 911	89 979	7 017	8 945	15 995	45 834	64 590	96
41-50	1 123	1 874	2 997	27 696	49 726	77 477	6 013	9 203	15 260	34 832	60 803	99
Over 50	547	891	1 438	21 863	31 060	52 980	5 457	7 336	12 843	27 867	39 287	107
Other	2 406	2 728	5 136	32 652	37 854	70 573	6 862	7 733	15 183	41 920	48 315	657

(a) Management, commerce, business law, economics and econometrics defined as field of education codes, 08, 090901, and 0919, from the ABS Australian Standard Classification of Education (ASCED).

(b) Totals include students whose genders are not known.

na Not available.

Source: DEST; NCVET (unpublished).

Table 11A.4.4

Table 11A.4.4 Total number of students, by State and Territory

2002	University	Indigenous			Non-Indigenous			Unknown			Total		
		Males		Females	Total			Males		Females	Total		
		Males	Females	Total	Males	Females	Total	Males	Females	Total	Males	Females	Total
	NSW	na	na	na	na	na	na	na	na	na	na	na	na
	Victoria	na	na	na	na	na	na	na	na	na	na	na	na
	Queensland	na	na	na	na	na	na	na	na	na	na	na	na
	WA	na	na	na	na	na	na	na	na	na	na	na	na
	SA	na	na	na	na	na	na	na	na	na	na	na	na
	Tasmania	na	na	na	na	na	na	na	na	na	na	na	na
	ACT	na	na	na	na	na	na	na	na	na	na	na	na
	NT	na	na	na	na	na	na	na	na	na	na	na	na
	Multi-State	na	na	na	na	na	na	na	na	na	na	na	na
	Total	na	na	na	na	na	na	na	na	na	na	na	na
	Technical or Further Educational Institution (including TAFE Colleges) (a)												
	NSW	8 667	8 481	17 166	198 507	214 866	413 746	69 627	50 700	122 412	276 801	274 047	2 476 553 324
	Victoria	2 325	2 032	4 361	202 238	181 849	384 268	54 632	52 400	108 189	259 195	236 281	1 342 496 818
	Queensland	8 066	6 643	14 717	124 473	118 887	243 389	25 280	14 829	40 468	157 819	140 359	396 298 574
	WA	2 177	2 275	4 454	51 753	50 954	102 752	10 399	9 919	20 441	64 329	63 148	170 127 647
	SA	4 699	3 302	8 022	40 445	39 048	79 728	25 064	18 978	44 174	70 208	61 328	388 131 924
	Tasmania	482	467	949	16 635	13 013	29 664	1 269	675	1 968	18 386	14 155	40 32 581
	ACT	5 230	4 541	9 792	6 143	5 590	11 739	320	321	826	11 693	10 452	212 22 357
	NT	120	127	247	9 624	9 429	19 054	213	198	420	9 957	9 754	10 19 721
	Total	31 766	27 868	59 708	649 818	633 636	1 284 340	186 804	148 020	338 898	868 388	809 524	5 034 1 682 946

Table 11A.4.4

Table 11A.4.4 Total number of students, by State and Territory

2003	University	Indigenous			Non-Indigenous			Unknown			Total			
		Males	Females	Total	Males	Females	Total	Males	Females	Total	Males	Females	Unknown	Total
	NSW	928	1 533	2 461	99 274	124 178	223 452	3 691	4 580	8 271	103 893	130 291	na	234 184
	Victoria	373	568	941	73 062	90 674	163 736	5 128	6 520	11 648	78 563	97 762	na	176 325
	Queensland	733	1 224	1 957	58 220	77 635	135 855	306	385	691	59 259	79 244	na	138 503
	WA	463	894	1 357	28 300	37 963	66 263	769	902	1 671	29 532	39 759	na	69 291
	SA	191	349	540	19 816	27 885	47 701	29	28	57	20 036	28 262	na	48 298
	Tasmania	105	173	278	6 857	7 115	13 972	103	90	193	7 065	7 378	na	14 443
	ACT	337	653	990	1 650	3 310	4 960	17	26	43	2 004	3 989	na	5 993
	NT	90	105	195	10 231	11 272	21 503	1	—	1	10 322	11 377	na	21 699
	Multi-State	64	195	259	3 135	7 408	10 543	3	14	17	3 202	7 617	na	10 819
	Total	3 284	5 694	8 978	300 545	387 440	687 985	10 047	12 545	22 592	313 876	405 679	na	719 555
Technical or Further Educational Institution (including TAFE Colleges) (a)														
	NSW	8 134	8 250	16 414	197 158	222 450	419 913	85 287	63 323	152 076	290 579	294 023	3 801	588 403
	Victoria	2 302	1 795	4 108	211 205	197 871	410 595	44 784	50 772	96 518	258 291	250 438	2 492	511 221
	Queensland	7 749	6 179	13 944	134 499	116 332	250 955	20 092	12 123	32 674	162 340	134 634	599	297 573
	WA	2 043	2 157	4 200	47 118	46 571	93 705	7 103	7 640	14 750	56 264	56 368	23	112 655
	SA	5 442	3 791	9 263	44 017	42 748	86 996	18 211	15 784	34 148	67 670	62 323	414	130 407
	Tasmania	532	512	1 048	18 495	14 571	33 114	923	614	1 594	19 950	15 697	109	35 756
	ACT	4 557	4 288	8 858	5 346	5 102	10 449	329	249	626	10 232	9 639	62	19 933
	NT	112	140	252	10 141	10 786	20 933	310	345	662	10 563	11 271	13	21 847
	Total	30 871	27 112	58 087	667 979	656 431	1 326 660	177 039	150 850	333 048	875 889	834 393	7 513	1 717 795

Table 11A.4.4

Table 11A.4.4 Total number of students, by State and Territory

2004	University	Indigenous			Non-Indigenous			Unknown			Total		
		Males	Females	Total	Males	Females	Total	Males	Females	Total	Males	Females	Total
	NSW	884	1 582	2 466	97 179	122 690	219 869	3 235	4 146	7 381	101 298	128 418	na
	Victoria	358	551	909	75 510	95 056	170 566	1 612	1 839	3 451	77 480	97 446	na
	Queensland	752	1 305	2 057	56 970	76 668	133 638	1 453	1 933	3 386	59 175	79 906	na
	WA	436	812	1 248	28 079	37 969	66 048	863	1 032	1 895	29 378	39 813	na
	SA	178	377	555	19 923	28 561	48 484	34	60	94	20 135	28 998	na
	Tasmania	82	151	233	7 002	7 461	14 463	106	112	218	7 190	7 724	na
	ACT	102	111	213	10 719	11 678	22 397	5	–	5	10 826	11 789	na
	NT	330	595	925	1 586	3 239	4 825	5	6	11	1 921	3 840	na
	Multi-State	69	220	289	3 195	7 517	10 712	33	67	100	3 297	7 804	na
	Total	3 191	5 704	8 895	300 163	390 839	691 002	7 346	9 195	16 541	310 700	405 738	na
	Technical or Further Educational Institution (including TAFE Colleges) (a)												
	NSW	8 300	8 523	16 827	172 058	184 552	356 854	82 325	59 657	143 805	262 683	252 732	2 071
	Victoria	2 233	1 867	4 105	209 325	192 641	403 020	39 016	33 754	73 583	250 574	228 262	1 872
	Queensland	7 002	5 916	12 927	124 668	110 989	235 882	18 367	10 476	29 975	150 037	127 381	1 366
	WA	1 858	2 097	3 955	45 719	44 179	89 916	7 913	9 467	17 391	55 490	55 743	29
	SA	5 685	3 925	9 613	45 415	42 382	87 818	16 101	12 905	29 035	67 201	59 212	53
	Tasmania	651	527	1 182	20 467	15 661	36 241	622	454	1 122	21 740	16 642	163
	ACT	4 063	3 506	7 571	6 231	5 656	11 901	111	71	184	10 405	9 233	18
	NT	200	280	481	10 043	10 563	20 622	561	636	1 222	10 804	11 479	42
	Total	29 992	26 641	56 661	633 926	606 623	1 242 254	165 016	127 420	296 317	828 934	760 684	5 614

OVERCOMING INDIGENOUS
DISADVANTAGE: KEY
INDICATORS 2007

ATTACHMENT
TABLES

Table 11A.4.4

Table 11A.4.4 Total number of students, by State and Territory

2005	University	Indigenous			Non-Indigenous			Unknown			Total			
		Males		Females	Total	Males		Females	Total	Males		Females	Unknown	Total
		Males	Females	Total	Total	Males	Females	Total	Total	Males	Females	Unknown	Total	
	NSW	832	1 580	2 412	91 661	117 884	209 545	8 435	10 325	18 760	100 928	129 789	na	230 717
	Victoria	329	560	889	74 146	95 759	169 905	1 753	1 972	3 725	76 228	98 291	na	174 519
	Queensland	639	1 201	1 840	56 420	77 379	133 799	551	521	1 072	57 610	79 101	na	136 711
	WA	388	730	1 118	28 630	39 315	67 945	832	1 009	1 841	29 850	41 054	na	70 904
	SA	168	377	545	20 001	28 725	48 726	82	76	158	20 251	29 178	na	49 429
	Tasmania	87	163	250	6 219	7 388	13 607	62	144	206	6 368	7 695	na	14 063
	ACT	83	111	194	10 518	11 482	22 000	–	–	–	10 601	11 593	na	22 194
	NT	297	542	839	1 617	3 240	4 857	–	3	3	1 914	3 785	na	5 699
	Multi-State	74	205	279	4 510	8 591	13 101	20	45	65	4 604	8 841	na	13 445
	Total	2 897	5 469	8 366	293 722	389 763	683 485	11 735	14 095	25 830	308 354	409 327	na	717 681
Technical or Further Educational Institution (including TAFE Colleges) (a)														
	NSW	9 516	9 907	19 461	186 951	206 067	393 401	81 867	65 373	149 203	278 334	281 347	2 384	562 065
	Victoria	2 337	2 003	4 343	209 442	193 900	403 587	28 411	22 513	51 123	240 190	218 416	447	459 053
	Queensland	7 357	6 161	13 524	126 688	110 095	237 075	22 443	16 746	39 799	156 488	133 002	908	290 398
	WA	1 905	2 247	4 153	46 800	47 323	94 253	7 822	9 436	17 307	56 527	59 006	180	115 713
	SA	6 149	4 062	10 211	48 834	42 447	91 290	15 874	12 681	28 593	70 857	59 190	47	130 094
	Tasmania	651	545	1 197	21 395	16 083	37 519	527	439	991	22 573	17 067	67	39 707
	ACT	5 152	4 222	9 378	6 378	5 301	11 684	119	79	198	11 649	9 602	9	21 260
	NT	184	274	459	10 425	10 720	21 165	470	839	1 340	11 079	11 833	52	22 964
	Total	33 251	29 421	62 726	656 913	631 936	1 289 974	157 533	128 106	288 554	847 697	789 463	4 094	1 641 254

OVERCOMING INDIGENOUS
DISADVANTAGE: KEY
INDICATORS 2007

ATTACHMENT
TABLES

Table 11A.4.4

Table 11A.4.4 Total number of students, by State and Territory

Indigenous			Non-Indigenous			Unknown			Total		
Males	Females	Total	Males	Females	Total	Males	Females	Total	Males	Females	Total

(a) Totals include students whose genders are not known.
– Nil or rounded to zero (includes null cells). **na** Not available.
Source: DEST; NCVET (unpublished).

Table 11A.4.5

Table 11A.4.5 Total number of students, by remoteness

	Indigenous			Non-Indigenous			Unknown			Total		
	Males	Females	Total	Males	Females	Total	Males	Females	Total	Males	Females	Total
2002												
University (a)												
Major cities	na	na	na	na	na	na	na	na	na	na	na	na
Inner regional	na	na	na	na	na	na	na	na	na	na	na	na
Outer regional	na	na	na	na	na	na	na	na	na	na	na	na
Remote	na	na	na	na	na	na	na	na	na	na	na	na
Very remote	na	na	na	na	na	na	na	na	na	na	na	na
Technical or Further Educational Institution (including TAFE Colleges) (b)												
Major cities	7 188	6 720	13 918	339 148	351 441	691 021	107 071	93 432	201 935	453 407	451 593	1 874 906 874
Inner regional	5 246	4 285	9 545	153 979	147 692	301 869	39 149	28 963	69 088	198 374	180 940	1 188 380 502
Outer regional	8 096	6 994	15 102	104 205	91 408	195 727	23 609	14 413	38 707	135 910	112 815	811 249 536
Remote	2 835	2 610	5 454	19 443	15 899	35 394	5 845	2 485	8 383	28 123	20 994	114 49 231
Very remote	7 039	6 051	13 111	8 924	7 270	16 223	2 840	1 781	4 665	18 803	15 102	94 33 999
2003												
University (a)												
Major cities	1 659	2 477	4 136	235 859	291 460	527 319	7 319	8 881	16 200	244 837	302 818	na 547 655
Inner regional	695	1 240	1 935	43 438	62 440	105 878	2 246	3 080	5 326	46 379	66 760	na 113 139
Outer regional	610	1 137	1 747	18 365	28 822	47 188	418	518	937	19 394	30 478	na 49 872
Remote	137	385	522	2 129	3 508	5 637	51	45	95	2 317	3 938	na 6 255
Very remote	183	455	637	754	1 209	1 963	13	21	34	949	1 685	na 2 635

Table 11A.4.5

Table 11A.4.5 Total number of students, by remoteness

	Indigenous			Non-Indigenous			Unknown			Total		
	Males	Females	Total	Males	Females	Total	Males	Females	Total	Males	Females	Total
	Technical or Further Educational Institution (including TAFE Colleges) (b)											
Major cities	6 800	6 428	13 245	351 591	368 958	721 709	104 610	95 606	201 412	463 001	470 992	2 373 936 366
Inner regional		4 340	9 437	159 807	153 826	314 239	36 309	28 581	66 710	201 203	186 747	2 436 390 386
Outer regional	8 474	6 929	15 440	108 198	92 839	201 356	21 747	15 353	37 902	138 419	115 121	1 158 254 698
Remote	3 017	2 764	5 794	20 077	15 776	35 930	3 791	2 396	6 255	26 885	20 936	158 47 979
Very remote	6 532	5 664	12 220	8 545	6 721	15 306	2 049	1 355	3 419	17 126	13 740	79 30 945
2004												
University (a)												
Major cities	2 475	4 306	6 781	261 504	335 085	596 589	5 928	7 328	13 256	269 907	346 719	na 616 626
Inner regional	573	1 086	1 659	34 252	50 152	84 404	1 127	1 560	2 687	35 952	52 798	na 88 750
Outer regional	116	281	397	2 000	3 238	5 238	21	29	50	2 137	3 548	na 5 685
Remote	22	18	40	703	1 009	1 712	7	7	14	732	1 034	na 1 766
Very remote	—	—	—	—	—	—	—	—	—	—	—	na —
Technical or Further Educational Institution (including TAFE Colleges) (b)												
Major cities	6 641	6 732	13 379	333 081	338 316	672 256	94 713	78 981	174 486	434 435	424 029	1 657 860 121
Inner regional	5 166	4 251	9 422	153 346	142 789	296 580	34 592	25 379	61 012	193 104	172 419	1 491 367 014
Outer regional	8 274	7 220	15 502	102 010	87 624	189 881	20 229	14 116	35 048	130 513	108 960	958 240 431
Remote	2 575	2 437	5 015	16 871	13 592	30 488	3 169	2 028	5 275	22 615	18 057	106 40 778
Very remote	6 384	5 134	11 522	7 762	6 194	13 957	2 150	1 170	3 323	16 296	12 498	8 28 802

OVERCOMING INDIGENOUS
DISADVANTAGE: KEY
INDICATORS 2007

ATTACHMENT
TABLES

Table 11A.4.5

Table 11A.4.5 Total number of students, by remoteness

	Indigenous			Non-Indigenous			Unknown			Total			
	Males	Females	Total	Males	Females	Total	Males	Females	Total	Males	Females	Unknown	Total
2005													
University (a)													
Major cities	2 239	4 159	6 398	256 383	334 121	590 504	9 012	10 481	19 493	267 634	348 761	na	616 395
Inner regional	514	1 032	1 546	32 787	49 716	82 503	2 142	2 907	5 049	35 443	53 655	na	89 098
Outer regional	99	239	338	1 923	3 087	5 010	20	25	45	2 042	3 351	na	5 393
Remote	29	23	52	660	968	1 628	7	16	23	696	1 007	na	1 703
Very remote	—	—	—	—	—	—	—	—	—	—	—	na	—
Technical or Further Educational Institution (including TAFE Colleges) (b)													
Major cities	7 337	7 241	14 604	352 950	358 165	711 675	86 151	74 667	161 850	446 438	440 073	1 618	888 129
Inner regional	5 499	4 784	10 291	156 094	145 877	302 214	34 583	26 623	62 188	196 176	177 284	1 233	374 693
Outer regional	8 911	7 998	16 921	102 824	89 251	192 318	22 595	15 975	39 168	134 330	113 224	853	248 407
Remote	2 964	2 800	5 769	17 631	14 890	32 556	3 107	2 376	5 520	23 702	20 066	77	43 845
Very remote	7 497	6 081	13 581	7 783	6 319	14 116	1 956	1 411	3 373	17 236	13 811	23	31 070

(a) Differences between the sum of components and totals are due to rounding differences in allocating students to ASGC Remoteness categories.

(b) Totals include students whose genders are not known. Excludes data with remoteness region as 'other'.

– Nil or rounded to zero. **na** Not available.

Source: DEST; NCVER (unpublished).

Table 11A.4.6

Table 11A.4.6 Total number of students, by age

	Indigenous			Non-Indigenous			Unknown			Total		
	Males	Females	Total	Males	Females	Total	Males	Females	Total	Males	Females	Total
2002												
<i>University</i>												
Less than 18	na	na	na	na	na	na	na	na	na	na	na	na
18-30	na	na	na	na	na	na	na	na	na	na	na	na
31-40	na	na	na	na	na	na	na	na	na	na	na	na
41-50	na	na	na	na	na	na	na	na	na	na	na	na
Over 50	na	na	na	na	na	na	na	na	na	na	na	na
<i>Technical or Further Educational Institution (including TAFE Colleges) (a)</i>												
18-30	14 873	10 999	25 896	298 971	246 854	546 046	62 372	47 876	110 668	376 216	305 729	665 682 610
31-40	6 249	5 747	12 008	116 453	126 129	242 705	38 589	28 135	66 977	161 291	160 011	388 321 690
41-50	3 120	3 878	7 002	88 628	114 025	202 785	31 501	26 389	58 090	123 249	144 292	336 267 877
Over 50	1 347	1 979	3 332	65 271	74 885	140 296	24 252	20 264	44 675	90 870	97 128	305 188 303
Other	6 177	5 265	11 470	80 495	71 743	152 508	30 090	25 356	58 488	116 762	102 364	3 340 222 466
2003												
<i>University</i>												
Less than 18	125	244	369	13 978	20 352	34 330	601	805	1 406	14 704	21 401	na 36 105
18-30	1 742	2 902	4 644	205 617	262 856	468 473	7 413	9 444	16 857	214 772	275 202	na 489 974
31-40	810	1 339	2 149	48 292	56 756	105 048	1 137	1 165	2 302	50 239	59 260	na 109 499
41-50	468	887	1 355	24 020	35 396	59 416	648	846	1 494	25 136	37 129	na 62 265
Over 50	139	322	461	8 637	12 080	20 717	248	285	533	9 024	12 687	na 21 711
Not stated	—	—	—	1	—	1	—	—	—	1	—	na 1

OVERCOMING INDIGENOUS
DISADVANTAGE: KEY
INDICATORS 2007

ATTACHMENT
TABLES

Table 11A.4.6

Table 11A.4.6 Total number of students, by age

	Indigenous			Non-Indigenous			Unknown			Total		
	Males	Females	Total	Males	Females	Total	Males	Females	Total	Males	Females	Total
Technical or Further Educational Institution (including TAFE Colleges) (a)												
18-30			10 534	303 788	253 781	558 058	57 079	45 061	102 402	375 075	309 376	777 685 228
31-40	6 140	5 581	11 732	118 424	126 570	245 279	38 220	28 326	66 783	162 784	160 477	533 323 794
41-50	3 313	3 781	7 104	91 283	117 623	209 210	31 270	27 869	59 351	125 866	149 273	526 275 665
Over 50	1 402	1 852	3 258	69 241	81 330	150 870	25 110	26 599	51 910	95 753	109 781	504 206 038
Other	5 808	5 364	11 225	85 243	77 127	163 243	25 360	22 995	52 602	116 411	105 486	5 173 227 070
2004												
University												
Less than 18	116	276	392	13 720	19 699	33 419	437	656	1 093	14 273	20 631	na 34 904
18-30	1 648	2 826	4 474	207 163	267 039	474 202	4 879	6 082	10 961	213 690	275 947	na 489 637
31-40	810	1 376	2 186	47 027	56 035	103 062	1 100	1 273	2 373	48 937	58 684	na 107 621
41-50	477	912	1 389	23 377	35 535	58 912	668	876	1 544	24 522	37 323	na 61 845
Over 50	140	314	454	8 876	12 531	21 407	262	308	570	9 278	13 153	na 22 431
Technical or Further Educational Institution (including TAFE Colleges) (a)												
18-30	13 565	10 203	23 782	295 876	238 307	534 588	54 661	41 173	96 155	364 102	289 683	740 654 525
31-40	5 938	5 554	11 497	108 217	114 504	222 938	35 197	25 206	60 706	149 352	145 264	525 295 141
41-50	3 282	3 783	7 069	83 246	108 802	192 284	29 063	23 751	53 067	115 591	136 336	493 252 420
Over 50	1 464	2 041	3 505	64 746	73 559	138 567	23 051	17 804	41 020	89 261	93 404	427 183 092
Other	5 743	5 060	10 808	81 841	71 451	153 877	23 044	19 486	45 369	110 628	95 997	3 429 210 054

Table 11A.4.6

Table 11A.4.6 Total number of students, by age

	Indigenous			Non-Indigenous			Unknown			Total		
	Males	Females	Total	Males	Females	Total	Males	Females	Total	Males	Females	Total
2005												
University												
Less than 18	88	224	312	14 199	20 505	34 704	410	532	942	14 697	21 261	na
18-30	1 548	2 758	4 306	203 684	265 509	469 193	8 529	9 778	18 307	213 761	278 045	na
31-40	712	1 297	2 009	44 492	55 269	99 761	1 534	1 896	3 430	46 738	58 462	na
41-50	401	884	1 285	22 396	35 378	57 774	867	1 375	2 242	23 664	37 637	na
Over 50	148	306	454	8 951	13 102	22 053	395	514	909	9 494	13 922	na
Technical or Further Educational Institution (including TAFE Colleges) (a)												
18-30	14 562	10 810	25 403	307 512	241 493	549 317	51 198	37 831	89 379	373 272	290 134	693
31-40	6 384	5 955	12 344	108 669	117 284	226 142	32 198	24 356	56 827	147 251	147 595	467
41-50	3 677	4 400	8 084	83 886	114 047	198 125	27 271	25 005	52 578	114 834	143 452	501
Over 50	1 633	2 254	3 887	67 272	80 327	147 779	23 595	20 237	44 056	92 500	102 818	404
Other	6 995	6 002	13 008	89 574	78 785	168 611	23 271	20 677	45 714	119 840	105 464	2 029

(a) Totals include students whose genders are not known.

– Nil or rounded to zero. na Not available.

Source: DEST; NCVET (unpublished).

Table 11A.4.7

Table 11A.4.7 Number of students in selected governance courses

	Indigenous	Non-Indigenous	Unknown	Total
2003				
<i>Training Package</i>				
Advanced Diploma of Local Government (Governance and Administration)	–	1	–	1
Certificate I in Local Government (Governance and Administration)	1	26	4	31
Certificate II in Local Government (Governance and Administration)	193	72	51	316
Certificate III in Local Government (Governance and Administration)	11	112	43	166
Certificate IV in Business (Governance)	122	26	62	210
Certificate IV in Local Government (Governance and Administration)	2	209	52	263
Diploma of Business (Governance)	26	1	–	27
Diploma of Local Government (Governance and Administration)	2	65	31	98
Governance Skills for Local Tourism Associations - Bruny Island	–	–	–	–
Governance Skills for Local Tourism Associations - River Run	–	–	–	–
<i>Courses</i>				
Certificate II in Introduction to Community Governance	5	4	–	9
Certificate III in Community Governance Support	–	17	6	23
2004				
<i>Training Package</i>				
Advanced Diploma of Local Government (Governance and Administration)	–	1	–	1
Certificate I in Local Government (Governance and Administration)	–	9	–	9
Certificate II in Local Government (Governance and Administration)	4	217	48	269
Certificate III in Local Government (Governance and Administration)	1	94	53	148
Certificate IV in Business (Governance)	322	34	43	399
Certificate IV in Local Government (Governance and Administration)	1	84	85	170
Diploma of Business (Governance)	3	4	1	8

OVERCOMING INDIGENOUS
DISADVANTAGE: KEY
INDICATORS 2007

ATTACHMENT
TABLES

Table 11A.4.7

Table 11A.4.7 Number of students in selected governance courses

	Indigenous	Non-Indigenous	Unknown	Total
Diploma of Local Government (Governance and Administration)	4	45	3	52
Governance Skills for Local Tourism Associations - Bruny Island	1	10	—	11
Governance Skills for Local Tourism Associations - River Run	1	6	3	10
<i>Courses</i>	—	—	—	—
Certificate II in Introduction to Community Governance	18	—	2	20
Certificate III in Community Governance Support	5	2	7	14
2005				
<i>Training Package</i>				
Advanced Diploma of Local Government (Governance and Administration)	—	—	—	—
Certificate I in Local Government (Governance and Administration)	—	—	—	—
Certificate II in Local Government (Governance and Administration)	48	97	8	153
Certificate III in Local Government (Governance and Administration)	—	65	27	92
Certificate IV in Business (Governance)	550	49	61	660
Certificate IV in Local Government (Governance and Administration)	1	65	79	145
Diploma of Business (Governance)	—	—	—	—
Diploma of Local Government (Governance and Administration)	2	49	6	57
Governance Skills for Local Tourism Associations - Bruny Island	—	—	—	—
Governance Skills for Local Tourism Associations - River Run	—	—	—	—
<i>Courses</i>	—	—	—	—
Certificate II in Introduction to Community Governance	46	2	—	48
Certificate III in Community Governance Support	17	16	—	33

— Nil or rounded to zero (including null cells).

Source: NCVET (unpublished).

OVERCOMING INDIGENOUS
DISADVANTAGE: KEY
INDICATORS 2007

ATTACHMENT
TABLES

Table 11A.4.8

Table 11A.4.8 Students of governance-related courses: management, commerce, business law, economics and econometrics (a)

	Indigenous				Non-Indigenous				Governance-related students				Students all courses			
	Governance-related students		Students all		Governance-related students		Students all		Total students		Indigenous rate		Total students		Indigenous rate	
	no.	no.	no.	Rate	no.	Rate	no.	Rate	no.	Rate	no.	Rate	no.	Rate	no.	Rate
2002																
University	809	na	na	..	156 556	na	na	..	157 365	0.5	99.5	..	na	..	na	..
Technical or Further Educational Institution (including TAFE Colleges)	23 440	59 708	39.3		592 533	1 284 340	46.1		615 973	3.8	96.2	4.4	1 344 048	4.4	95.6	95.6
<i>Total (b)</i>	24 249	59 708	40.6		749 089	1 284 340	58.3		773 338	3.1	96.9	4.4	1 344 048	4.4	95.6	95.6
2003																
University	843	8978	9.4		164 060	687985	23.8		164 903	0.5	99.5	1.3	696963	1.3	98.7	98.7
Technical or Further Educational Institution (including TAFE Colleges)	22 950	58 087	39.5		592 171	1 326 660	44.6		615 121	3.7	96.3	4.2	1384747	4.2	95.8	95.8
<i>Total (b)</i>	23 793	67 065	35.5		756 231	2 014 645	37.5		780 024	4	96.9	3.2	2081710	3.2	96.8	96.8
2004																
University	839	8895	9.4		156 176	691002	22.6		157 015	0.5	99.5	1.3	699897	1.3	98.7	98.7
Technical or Further Educational Institution (including TAFE Colleges)	21 944	56 661	38.7		537 647	1 242 254	43.3		559 591	3.9	96.1	4.4	1298915	4.4	95.6	95.6
<i>Total (b)</i>	22 783	65 556	34.8		693 823	1 933 256	35.9		716 606	4	96.8	3.3	1998812	3.3	96.7	96.7
2005																
University	753	8 366	9.0		151 361	683 485	22.1		152 114	0.5	99.5	1.2	691851	1.2	98.8	98.8
Technical or Further Educational Institution (including TAFE Colleges)	23 559	62 726	37.6		544 927	1 289 974	42.2		568 486	4.1	95.9	4.6	1352700	4.6	95.4	95.4
<i>Total (b)</i>	24 312	71 092	34.2		696 288	1 973 459	35.3		720 600	5	96.6	3.5	2044551	3.5	96.5	96.5

(a) Management, commerce, business law, economics and econometrics defined as field of education codes, 08, 090901, and 0919, from the ABS Australian Standard Classification of Education (ASCED).

(b) Totals include students whose genders are not known.

na Not available. .. Not applicable.

Source: DEST; NCVET (unpublished).